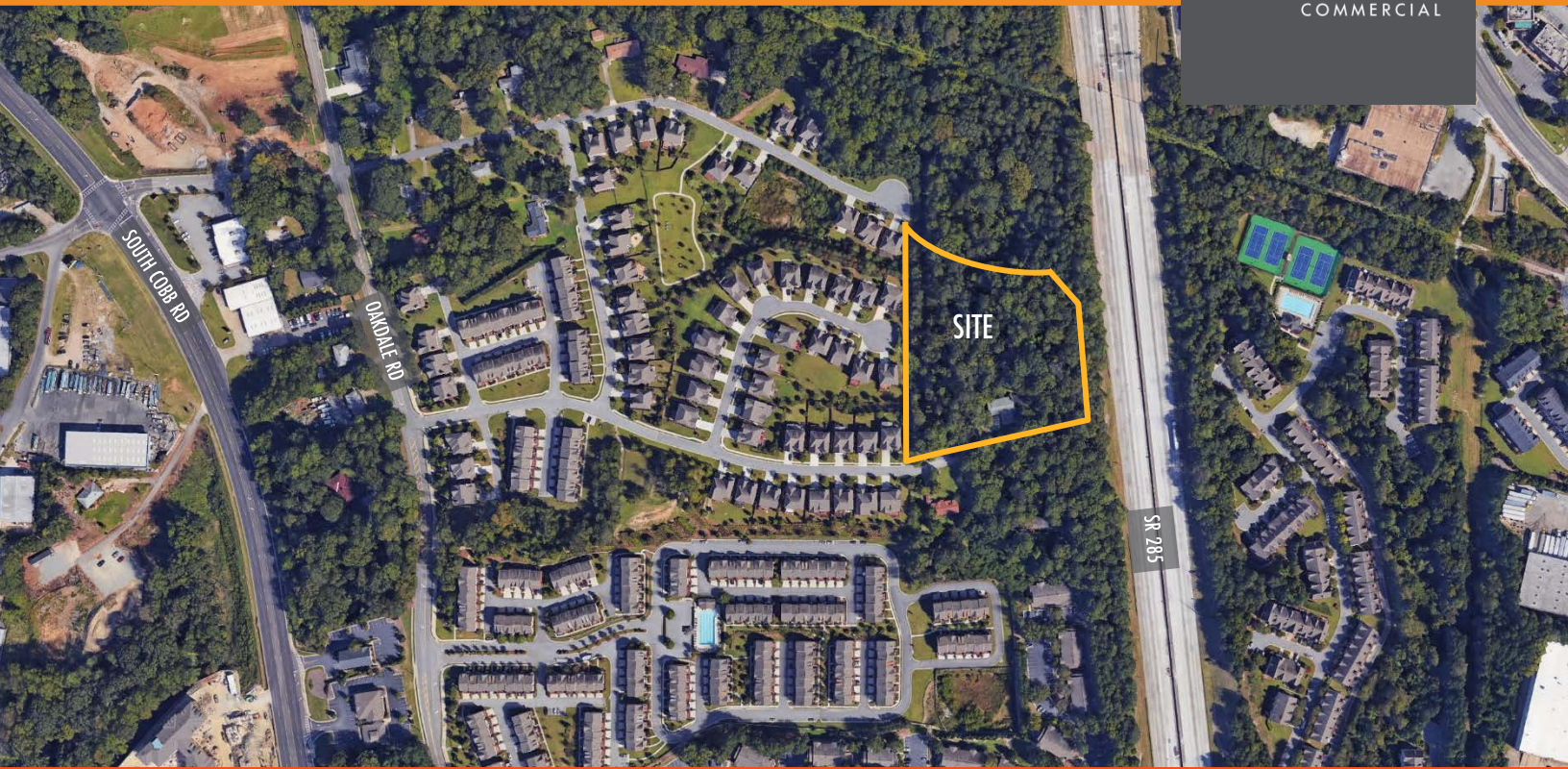


LAND FOR SALE

3.58 AC AVAILABLE

FOUNDRY
COMMERCIAL

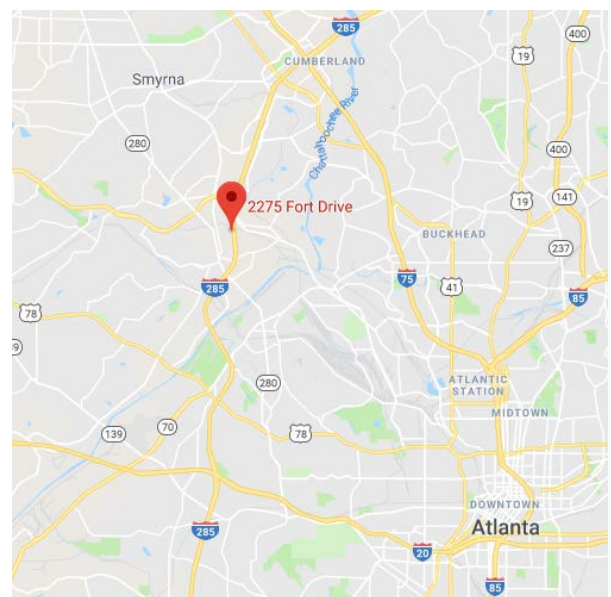


2275 FORT DRIVE SE. SMYRNA, GA 30080

HIGHLIGHTS

- Pricing: Negotiable
- 3.58 AC Available
- Zoning: RM-12, Cobb County
- Centrally located townhome or redevelopment site
- Close proximity to I-285 and many restaurants

Demographics	1 Mile	3 Miles	5 Miles
Population	11,395	68,405	191,727
Number of HH	5,953	31,756	83,712
Median HH Income	\$85,080	\$85,154	\$68,279
Median Home Value	\$321,223	\$318,158	\$277,004



For more information, please contact:

ANDY M. HEAD
404.713.4601
Andy.Head@foundrycommercial.com

3520 Piedmont Rd NE
Suite 235
Atlanta, GA 30305

Although the information contained herein was provided by sources believed to be reliable, Foundry Commercial makes no representation, expressed or implied, as to its accuracy and said information is subject to errors, omissions or changes.

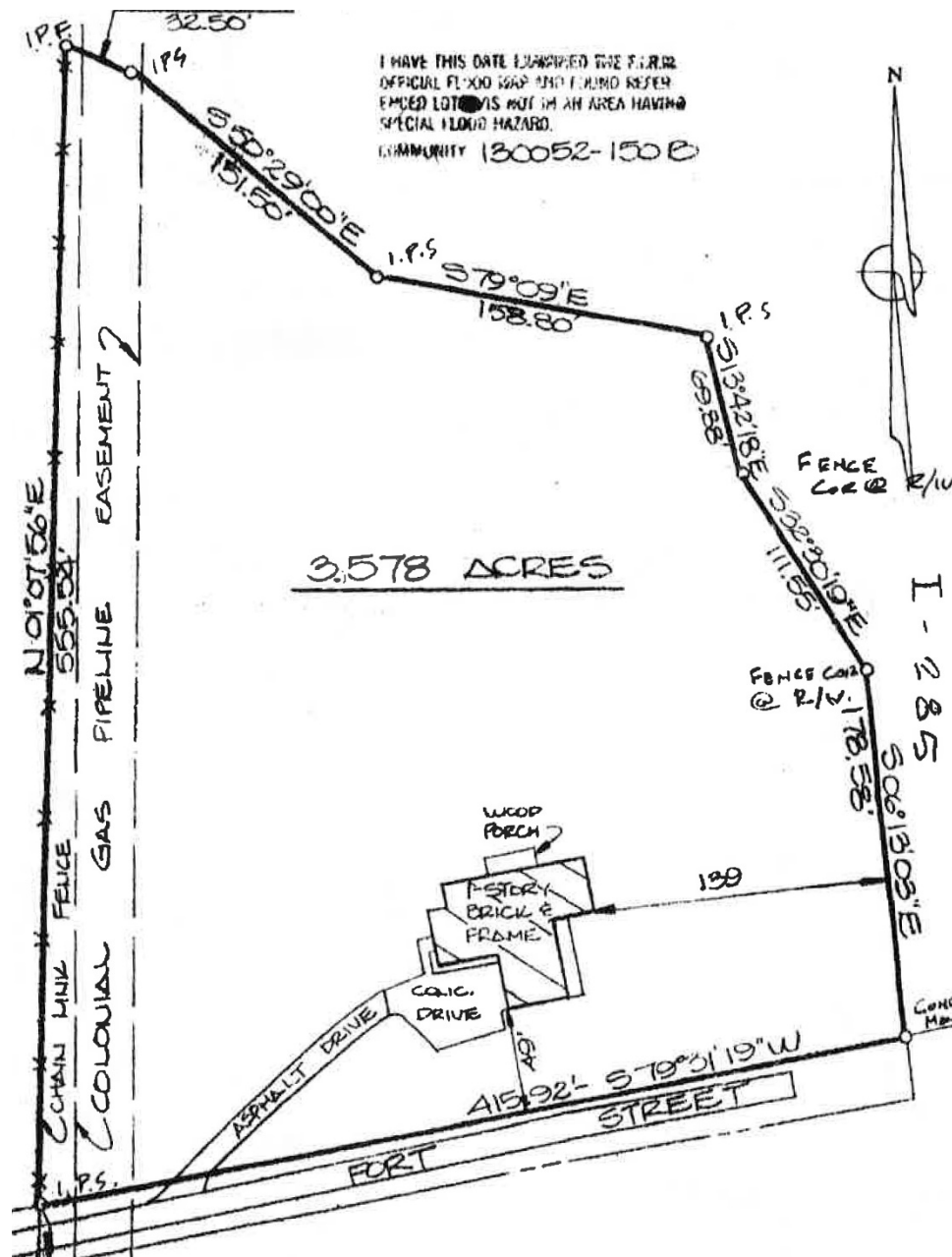
foundrycommercial.com

LAND FOR SALE

3.58 AC AVAILABLE

FOUNDry
COMMERCIAL

2275 FORT DRIVE SE. SMYRNA, GA 30080



For more information, please contact:

ANDY M. HEAD
404.713.4601
Andy.Head@foundrycommercial.com

3520 Piedmont Rd NE
Suite 235
Atlanta, GA 30305

Although the information contained herein was provided by sources believed to be reliable, Foundry Commercial makes no representation, expressed or implied, as to its accuracy and said information is subject to errors, omissions or changes.

foundrycommercial.com