

±2,725 - 10,414 RSF AVAILABLE FOR LEASE

258 SOUTHHALL LANE, MAITLAND, FL 32751

# 258

SOUTHHALL

FOUNDRY  
COMMERCIAL





## CLASS-A DEVELOPMENT

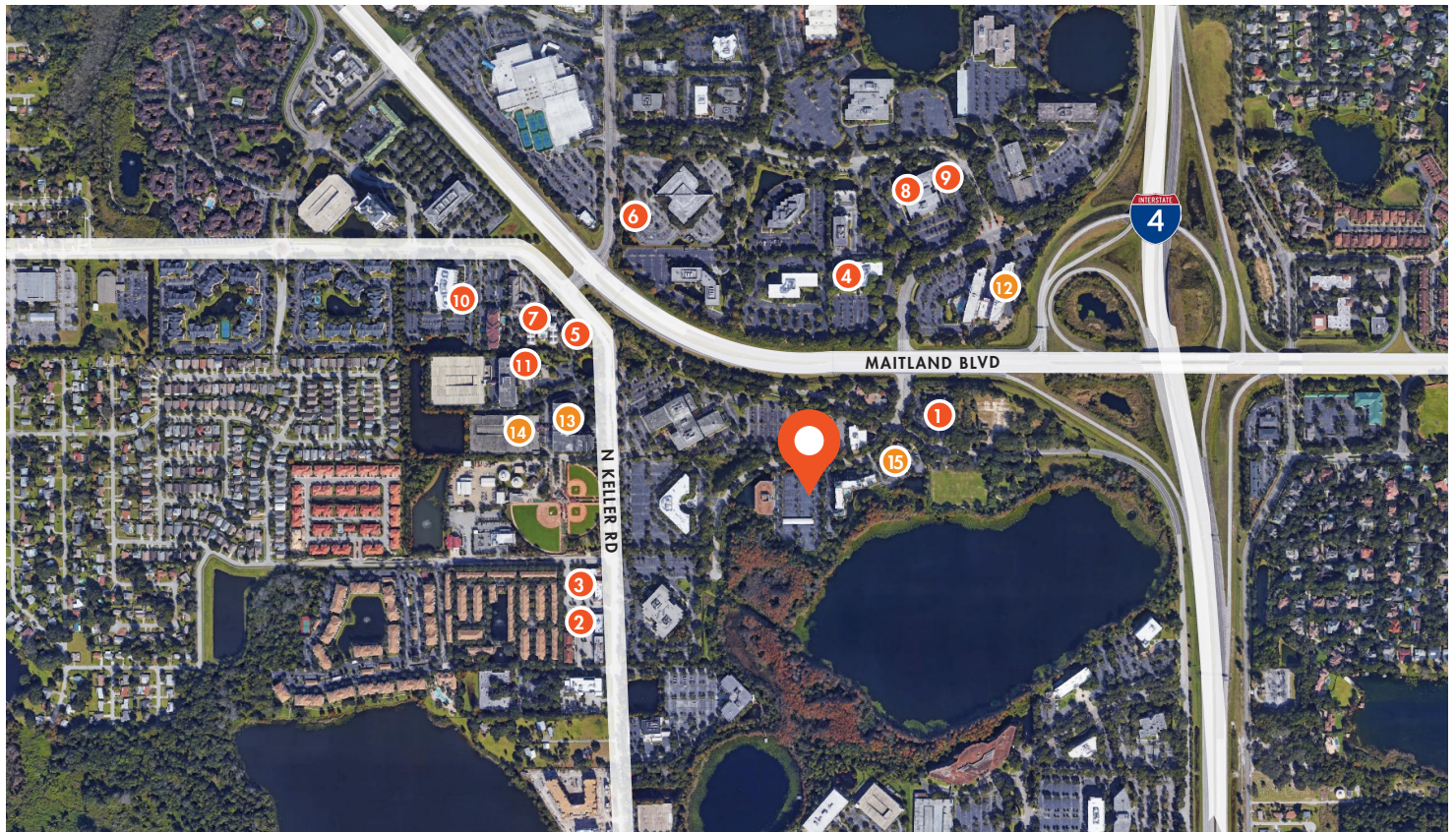
Four Story, Class A building consisting of approximately 89,705 SF.

## PROPERTY FEATURES

- Parking Ratio: 4.4/1,000 SF; covered parking spaces available
- Located in the heart of Maitland Center
- Numerous restaurants and entertainment options with easy access to Maitland Blvd and S Keller Rd
- Efficient floor plates with a low core factor

SUITE	RSF
150	3,718
210	3,443
310	2,725
330	10,414





## LOCATION

258 Southhall is located in the heart of Maitland with convenient access to I-4, Maitland Blvd, and Keller Rd. There are plenty of dining and hotel choices near the property, making it convenient for tenants and their clients.

## DINING

- 1 Applebee's
- 2 Curry Bowl
- 3 The Silly Grape
- 4 Wraps Delight Cafe
- 5 Chick Fil A
- 6 Subway
- 7 Wendy's
- 8 Tasty Deli Cafe
- 9 Greenhouse Cafe
- 10 Nature's Table Cafe
- 11 Unwind Cafe

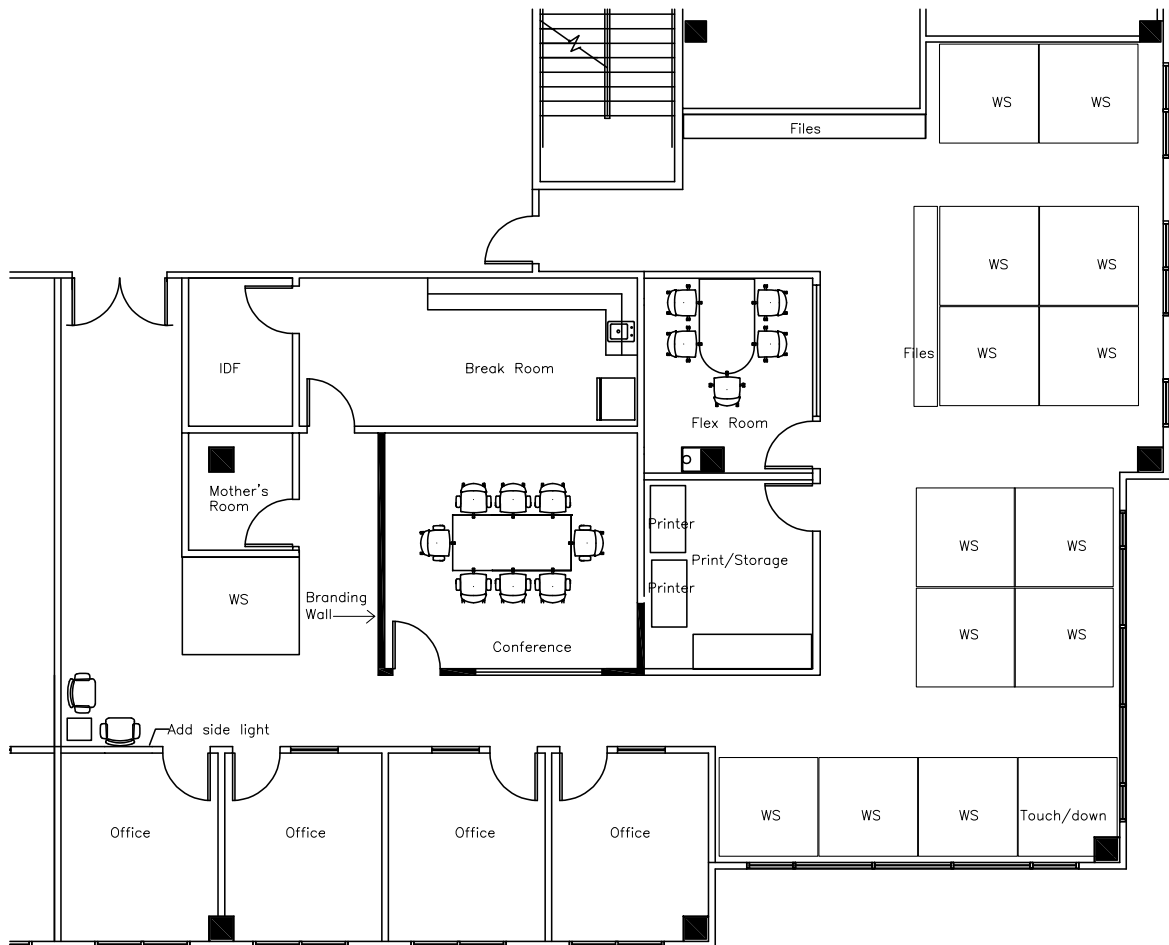
## HOTELS

- 12 Sheraton Orlando North Hotel
- 13 Extended Stay America
- 14 Courtyard by Marriott
- 15 Homewood Suites by Hilton

## 1<sup>ST</sup> FLOOR

SUITE 150

3,718 SF AVAILABLE AUGUST 2024

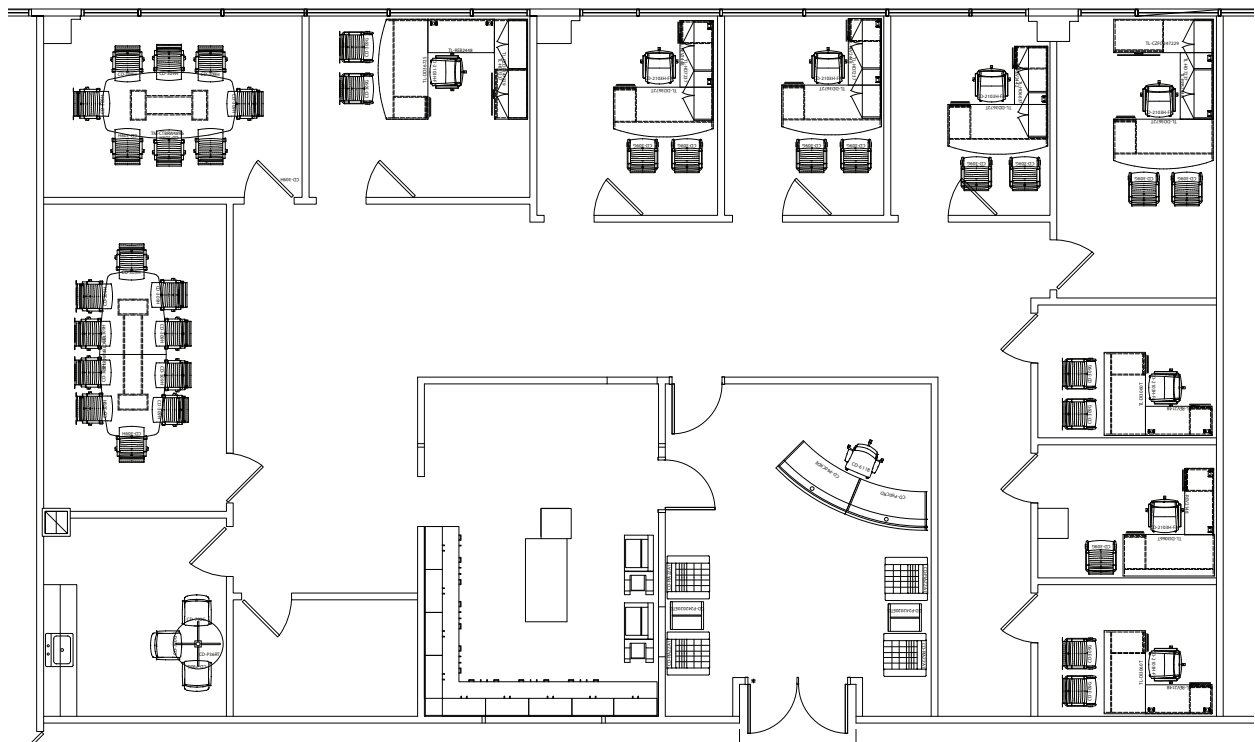


## 2<sup>ND</sup> FLOOR

SUITE 210

3,443 SF AVAILABLE

---

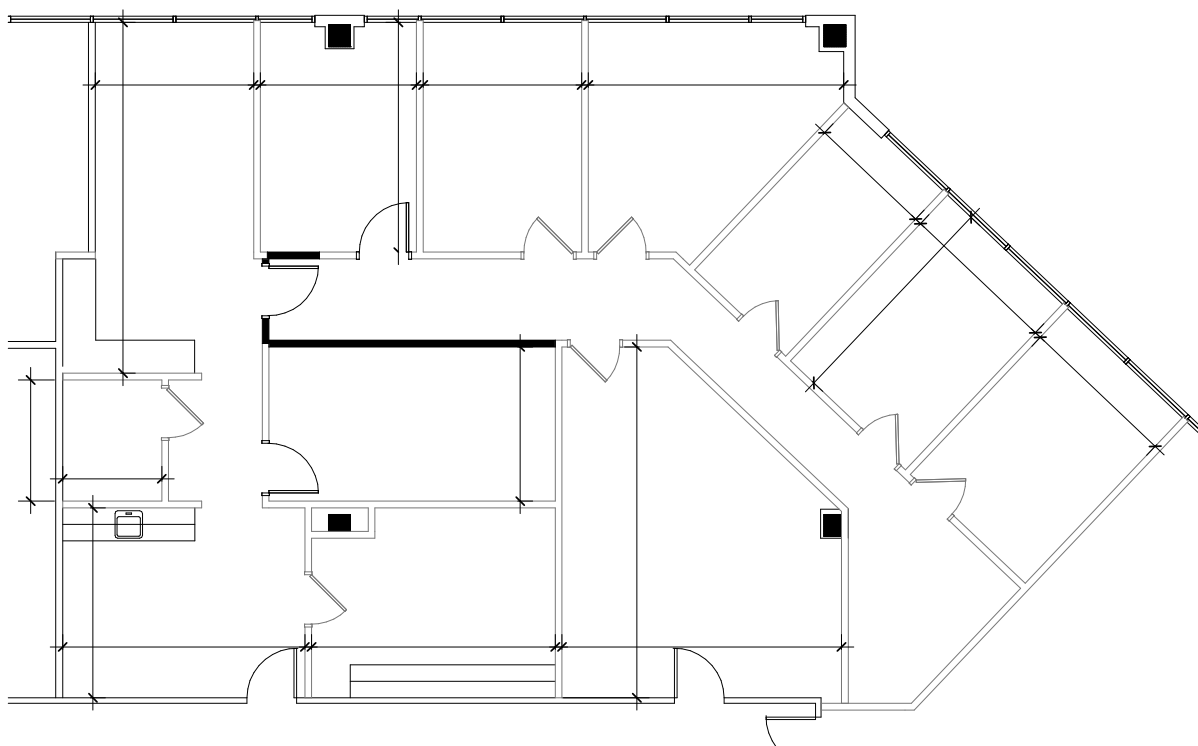


## 3<sup>RD</sup> FLOOR

SUITE 310

2,725 SF AVAILABLE

---



## 3<sup>RD</sup> FLOOR

SUITE 330

10,414 SF AVAILABLE

