

FOR LEASE

20,337 SF AVAILABLE
2700 HAZELHURST
ORLANDO, FL



20,337 SF
AVAILABLE

HANSROB ROAD

HAZELHURST AVE

JOHN YOUNG PARKWAY



FOUNDRY
COMMERCIAL

RENOVATIONS
COMPLETE!

FOR LEASE

20,337 SF AVAILABLE
2700 HAZELHURST
ORLANDO, FL



DOWNTOWN ORLANDO

20,337 SF
AVAILABLE

HANSROB ROAD

HAZELHURST AVE



RENOVATIONS
COMPLETE!

FOR LEASE

20,337 SF AVAILABLE
2700 HAZELHURST
ORLANDO, FL



SUITE INFORMATION

- **20,337 SF AVAILABLE**
- **20' CLEAR HEIGHT**
- **1,554 SF OFFICE**
- **BRAND NEW TPO ROOF (2022)**
- **85' SECURED TRUCK COURT**
- **1 DOCK HIGH DOOR**
- **1 DRIVE-IN RAMP**
- **ZONED I-G INDUSTRIAL**
- **AMPLE PARKING**
- **480V, 3-PHASE POWER**

MARKETED BY:

JUSTIN RUBY

407.865.0311

JUSTIN.RUBY@FOUNDRYCOMMERCIAL.COM

JEROD FREELAND

407.540.7744

JEROD.FREELAND@FOUNDRYCOMMERCIAL.COM

JOEY WOODMAN

407.748.5888

JOEY.WOODMAN@FOUNDRYCOMMERCIAL.COM

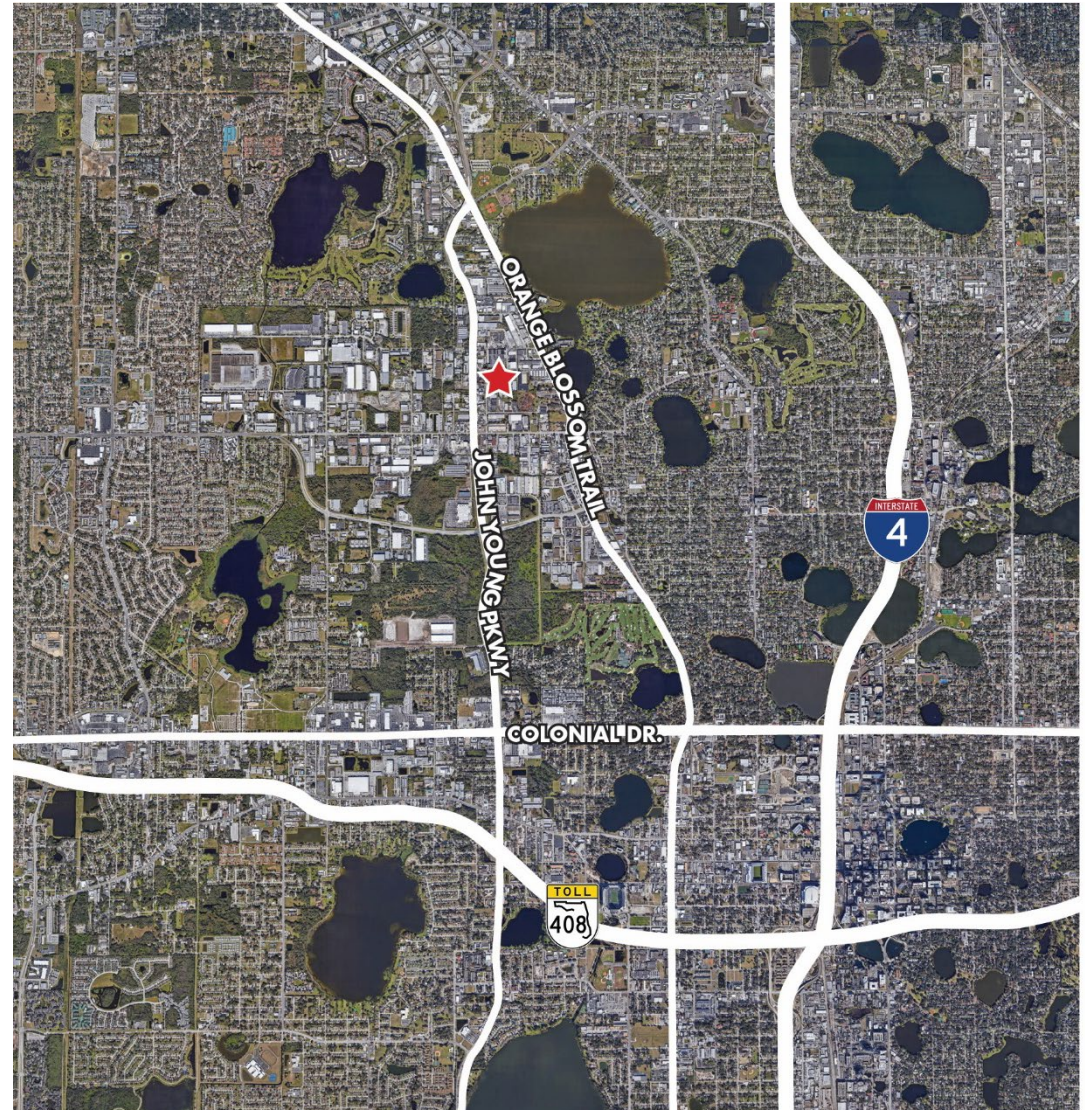


OWNED AND
MANAGED BY:



2700 HAZELHURST

20,337 SQUARE FEET

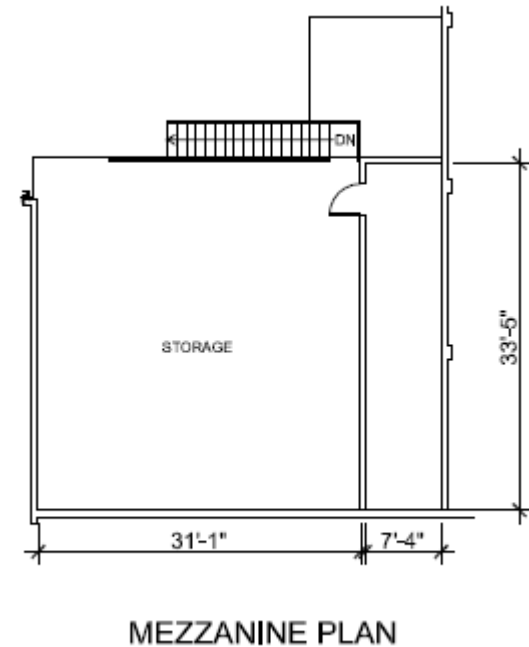
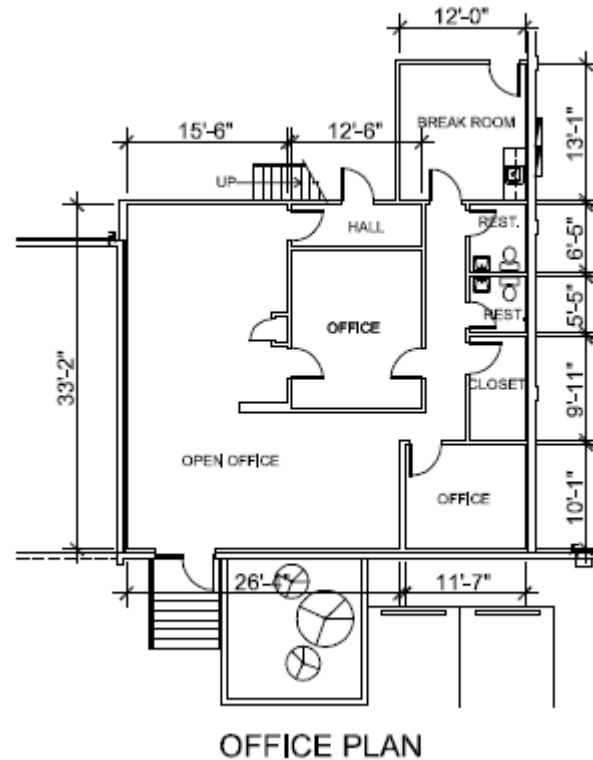
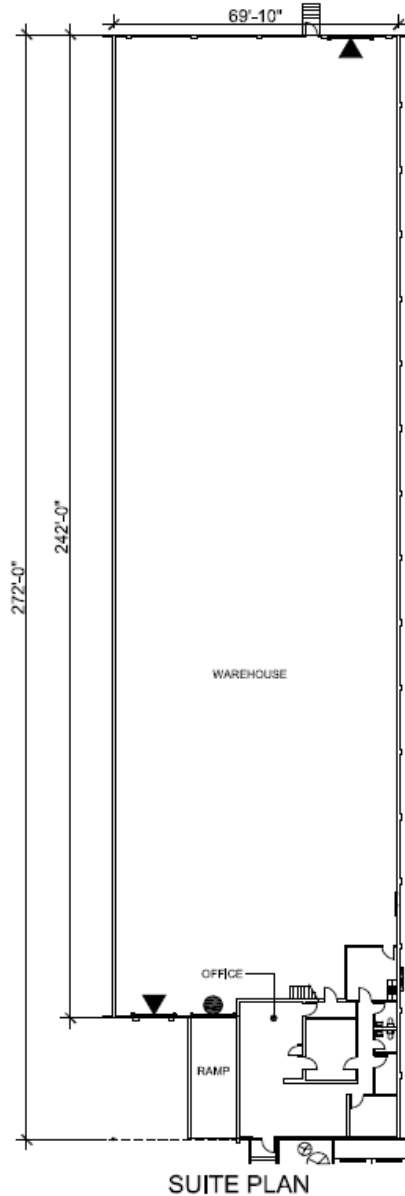


FOR LEASE

20,337 SF AVAILABLE
2700 HAZELHURST
ORLANDO, FL



BUILDING FLOOR PLAN – SUITE 2704 | 20,337 SF



FOR LEASE

20,337 SF AVAILABLE
2700 HAZELHURST
ORLANDO, FL



20,337 SF
AVAILABLE

HAZELHURST AVE

HANSROB ROAD



FOUNDRY
COMMERCIAL

RENOVATIONS
COMPLETE!