



CLT  
LOGISTICS  
CENTER

THE  
MERITEX<sup>®</sup>  
COMPANY  
ESTD 1916

# CLT LOGISTICS CENTER

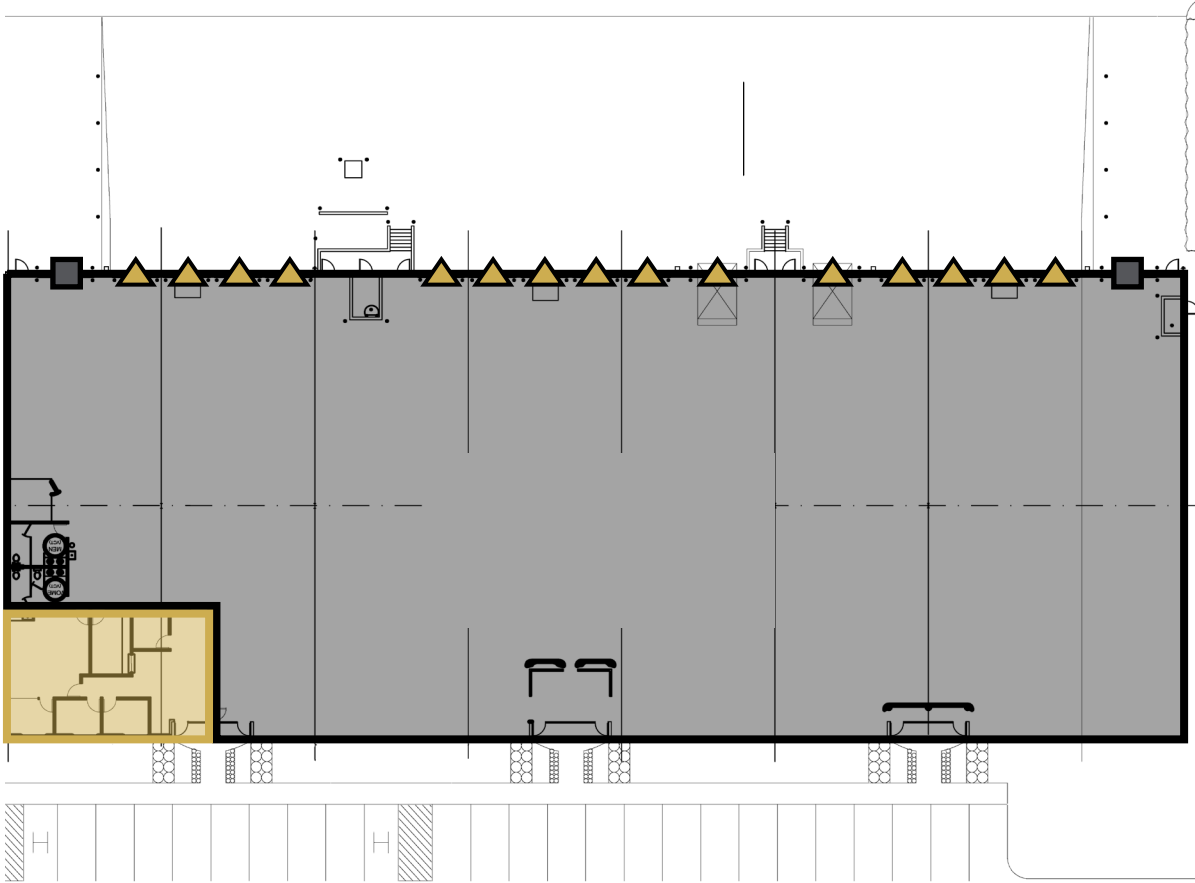
3200 INTERNATIONAL AIRPORT DR  
**SUITE 100**

**CHARLOTTE, NORTH CAROLINA**

30,514 SF AVAILABLE FOR LEASE



3200 INTERNATIONAL AIRPORT DR  
**SUITE 100**



- ▲ DOCK HIGH DOOR
- DRIVE-IN DOOR

**28,722 SF WAREHOUSE**  
**1,792 SF OFFICE**

**30,514 SF Total**

**SPACE FEATURES**

30,514 SF Total Available

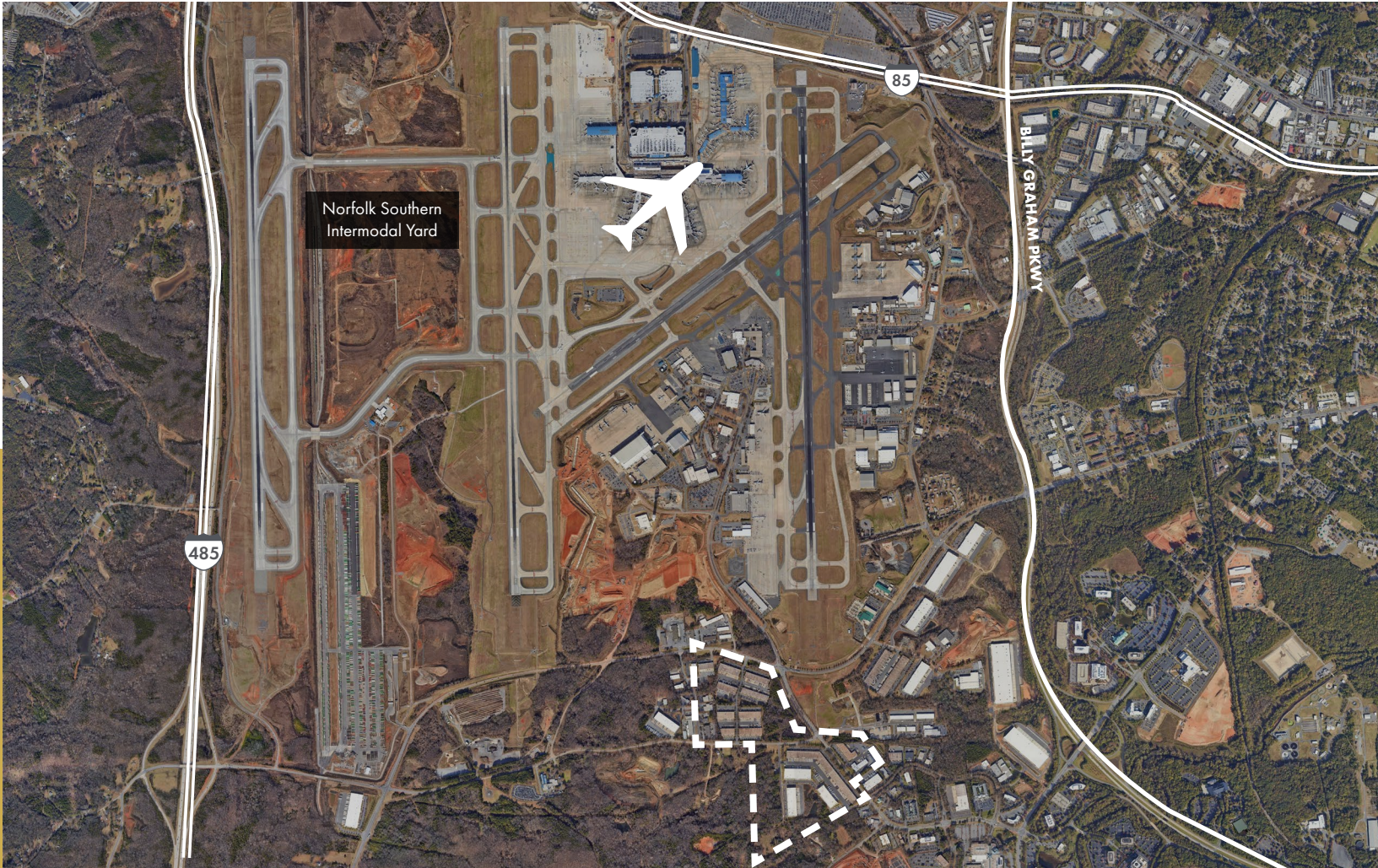
- 28,722 SF Warehouse
- 1,792 SF Office
- 15 Dock High Doors (3 with Pit Levelers)
- 2 (12' x 14') Drive-In Doors
- Wet Sprinkler System
- 18' Clear Height
- I-2 Zoning
- 400 Amp Power Service
- Lease Rate: Call for Rate



THE  
**MERITEX**  
COMPANY  
ESTD 1916

**OWNERSHIP - THE MERITEX COMPANY**

Meritex is a 107-year-old, family-owned company with a focus on light industrial properties, committed to providing exceptional spaces and service, allowing businesses to focus on their work at hand. Meritex strategically expands within key markets, ensuring that their properties and growth rate are in sync with their tenants' needs and ambitions. And once you're in a Meritex building, you can be assured that an expert local team is on hand when you need them.







SUITE NO.	TENANT	SF
3401	INTERNATIONAL AIRPORT DRIVE	43,345
3400	INTERNATIONAL AIRPORT DRIVE	42,088
3301	INTERNATIONAL AIRPORT DRIVE	40,920
3300	INTERNATIONAL AIRPORT DRIVE	46,977
3201	INTERNATIONAL AIRPORT DRIVE	31,725
<b>3200</b>	<b>INTERNATIONAL AIRPORT DRIVE</b>	<b>41,146</b>
3101	INTERNATIONAL AIRPORT DRIVE	28,138
3100	INTERNATIONAL AIRPORT DRIVE	50,356
3140	YORKMONT RD	43,341
3100	YORKMONT RD	22,111
3101	YORKMONT RD	192,874

## FOR MORE INFORMATION, PLEASE CONTACT:

### CASEY MULHERN

Senior Vice President

704.705.1182

[casey.mulhern@foundrycommercial.com](mailto:casey.mulhern@foundrycommercial.com)

### BRIAN CRAVER, CCIM

Senior Vice President

704.319.5072

[brian.craver@foundrycommercial.com](mailto:brian.craver@foundrycommercial.com)