



CLT  
LOGISTICS  
CENTER

THE  
MERITEX<sup>®</sup>  
COMPANY  
ESTD 1916

# CLT LOGISTICS CENTER

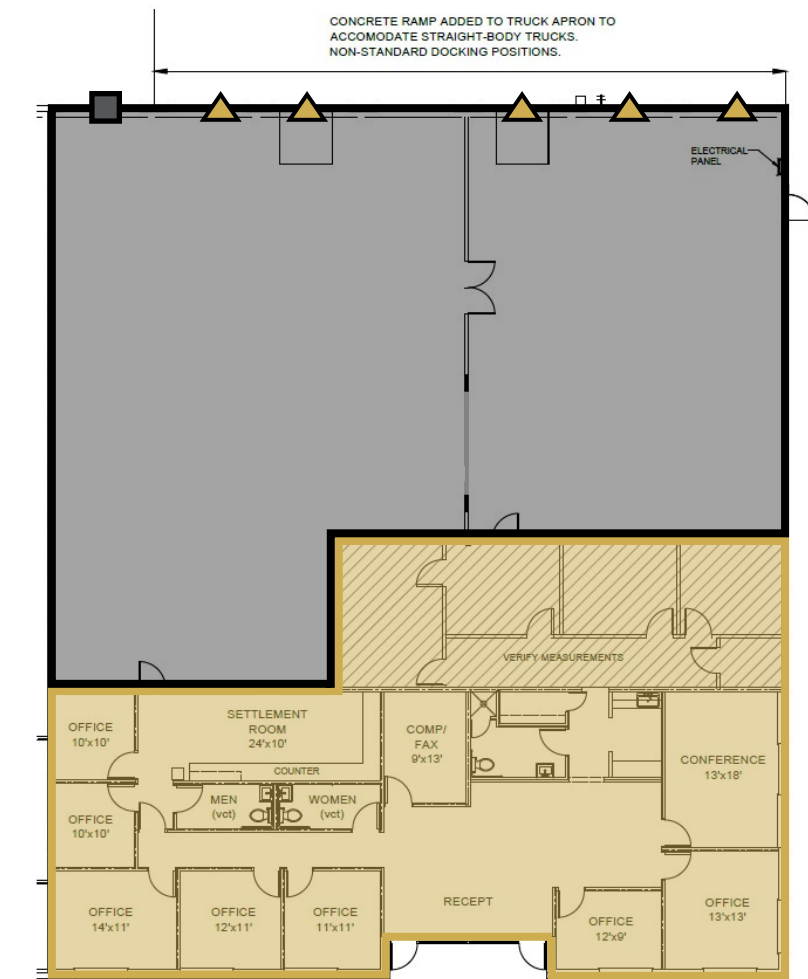
3300 INTERNATIONAL AIRPORT DR  
**SUITE 1100**

**CHARLOTTE, NORTH CAROLINA**

7,716 SF AVAILABLE FOR LEASE



3300 INTERNATIONAL AIRPORT DR  
SUITE 1100



**4,049 SF WAREHOUSE**  
**3,667 SF OFFICE**  
**7,716 SF Total**

SPACE FEATURES

7,716 SF Total Available

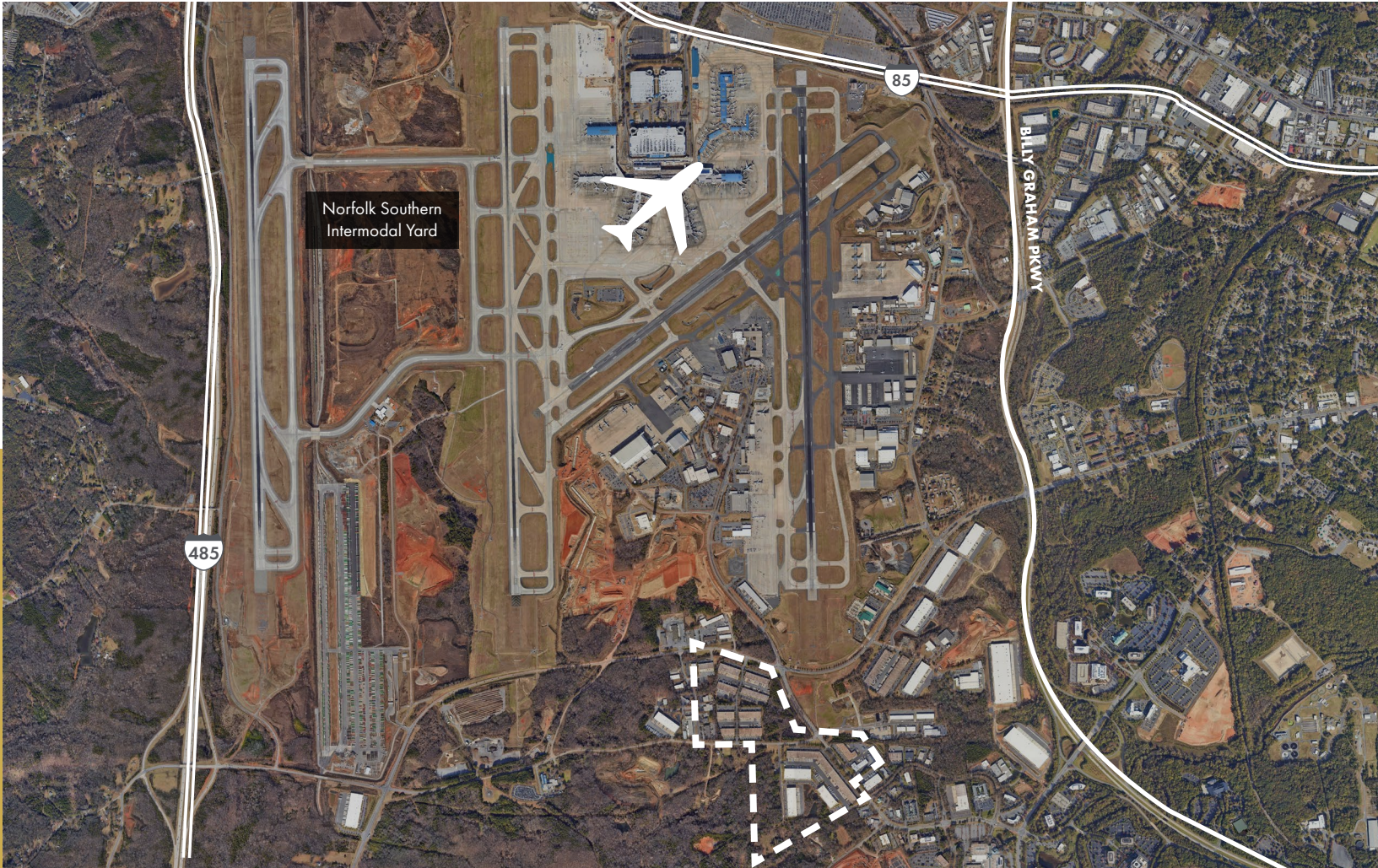
- 4,049 SF Warehouse
- 3,667 SF Office
- 5 Dock High Doors
- 1 Drive-In Door
- Wet Sprinkler System
- 18' Clear Height
- I-2 Zoning
- T-5 Lighting
- Partially Conditioned Warehouse
- Fenced Truck Court / Outside Storage Area



THE  
**MERITEX**  
COMPANY  
ESTD 1916

OWNERSHIP - THE MERITEX COMPANY

Meritex is a 107-year-old, family-owned company with a focus on light industrial properties, committed to providing exceptional spaces and service, allowing businesses to focus on their work at hand. Meritex strategically expands within key markets, ensuring that their properties and growth rate are in sync with their tenants' needs and ambitions. And once you're in a Meritex building, you can be assured that an expert local team is on hand when you need them.







SUITE NO.	TENANT	SF
3401	INTERNATIONAL AIRPORT DRIVE	43,345
3400	INTERNATIONAL AIRPORT DRIVE	42,088
3301	INTERNATIONAL AIRPORT DRIVE	40,920
<b>3300</b>	<b>INTERNATIONAL AIRPORT DRIVE</b>	<b>46,977</b>
3201	INTERNATIONAL AIRPORT DRIVE	31,725
3200	INTERNATIONAL AIRPORT DRIVE	41,146
3101	INTERNATIONAL AIRPORT DRIVE	28,138
3100	INTERNATIONAL AIRPORT DRIVE	50,356
3140	YORKMONT RD	43,341
3100	YORKMONT RD	22,111
3101	YORKMONT RD	192,874

## FOR MORE INFORMATION, PLEASE CONTACT:

### CASEY MULHERN

Senior Vice President

704.705.1182

[casey.mulhern@foundrycommercial.com](mailto:casey.mulhern@foundrycommercial.com)

### BRIAN CRAVER, CCIM

Senior Vice President

704.319.5072

[brian.craver@foundrycommercial.com](mailto:brian.craver@foundrycommercial.com)