

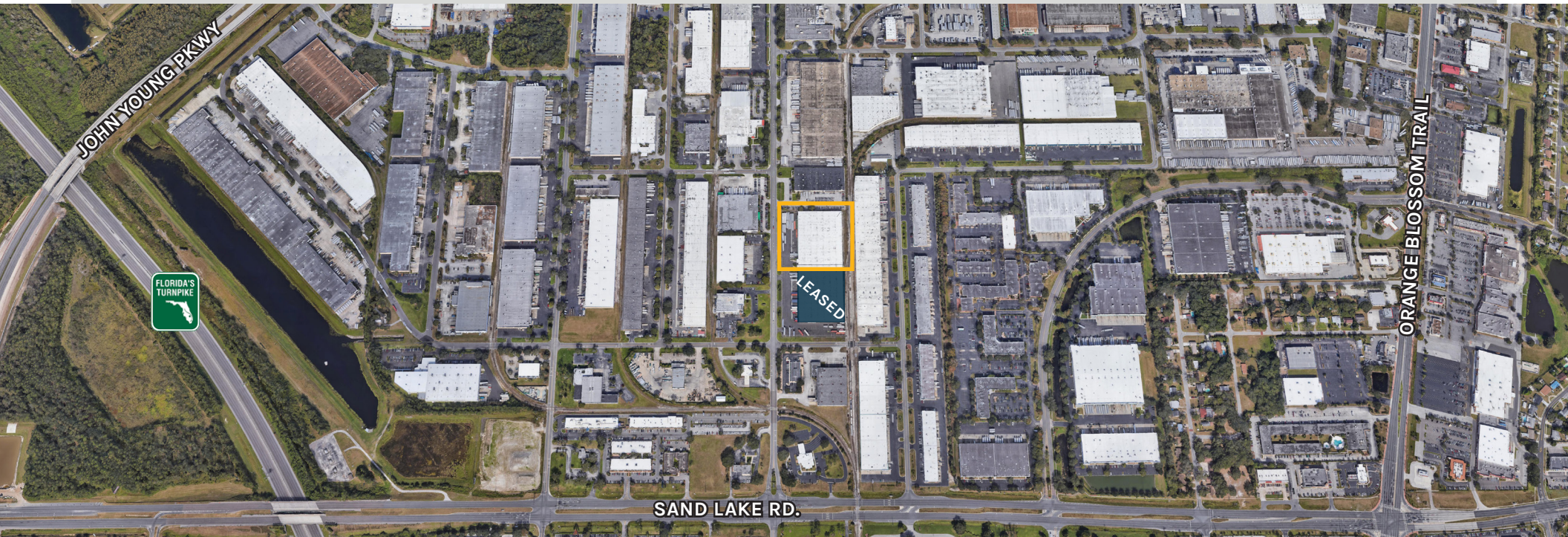


ARES
INDUSTRIAL
MANAGEMENT

7575 CHANCELLOR DRIVE

ORLANDO, FL 32809

FOR LEASE | 100,800 SQ FT | Class A Warehouse Facility



FOUNDRY
COMMERCIAL

JUSTIN RUBY, SIOR, CCIM **JOEY WOODMAN**
Partner Vice President
407-865-0311 407-748-5888

OWNED BY

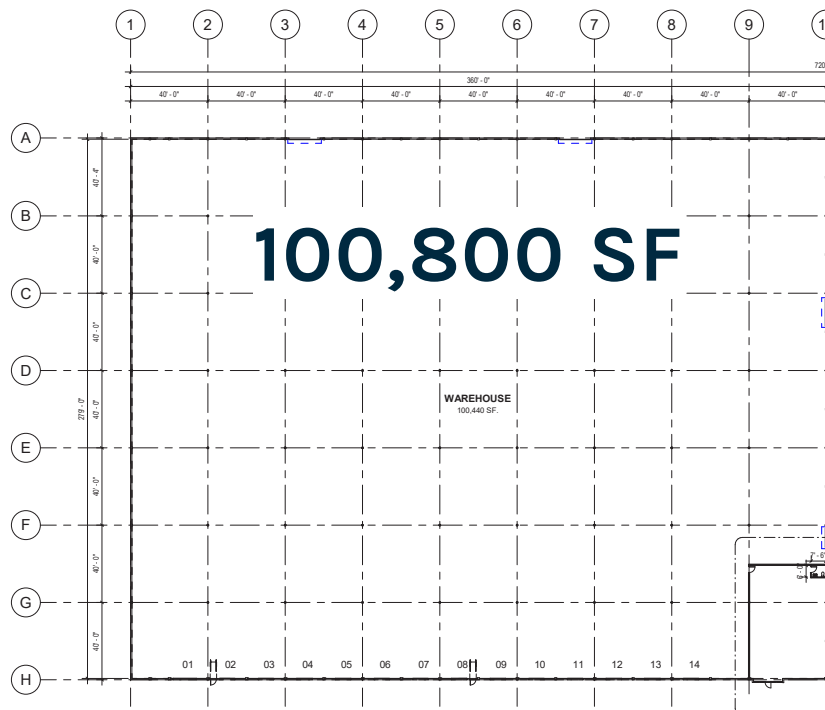


ARES
INDUSTRIAL
MANAGEMENT

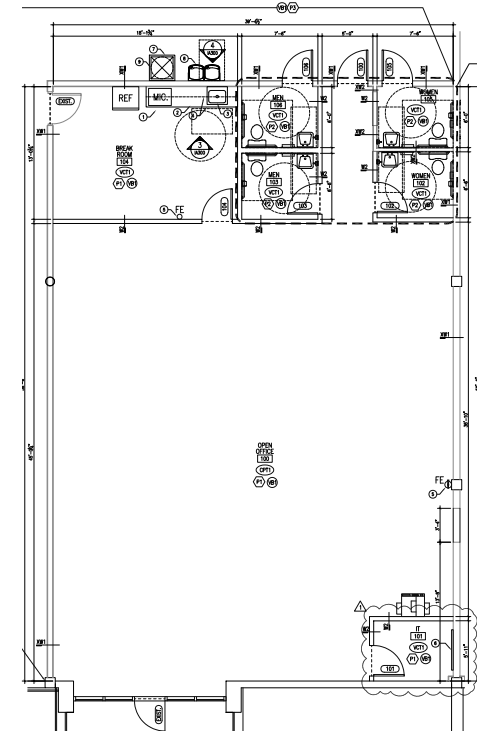
Property FEATURES

- 24' clear height
- 40' x 40' column spacing
- 1400 amps of power
- 35 auto parking spaces
- 10 trailer parking spaces
- Fully fenced property

- Wet Sprinkler (Non-ESFR)
- I-3 Zoning
- Orlando Central Park
- 13 Dock High Doors (5 pit-levelers, 8 EOD's)



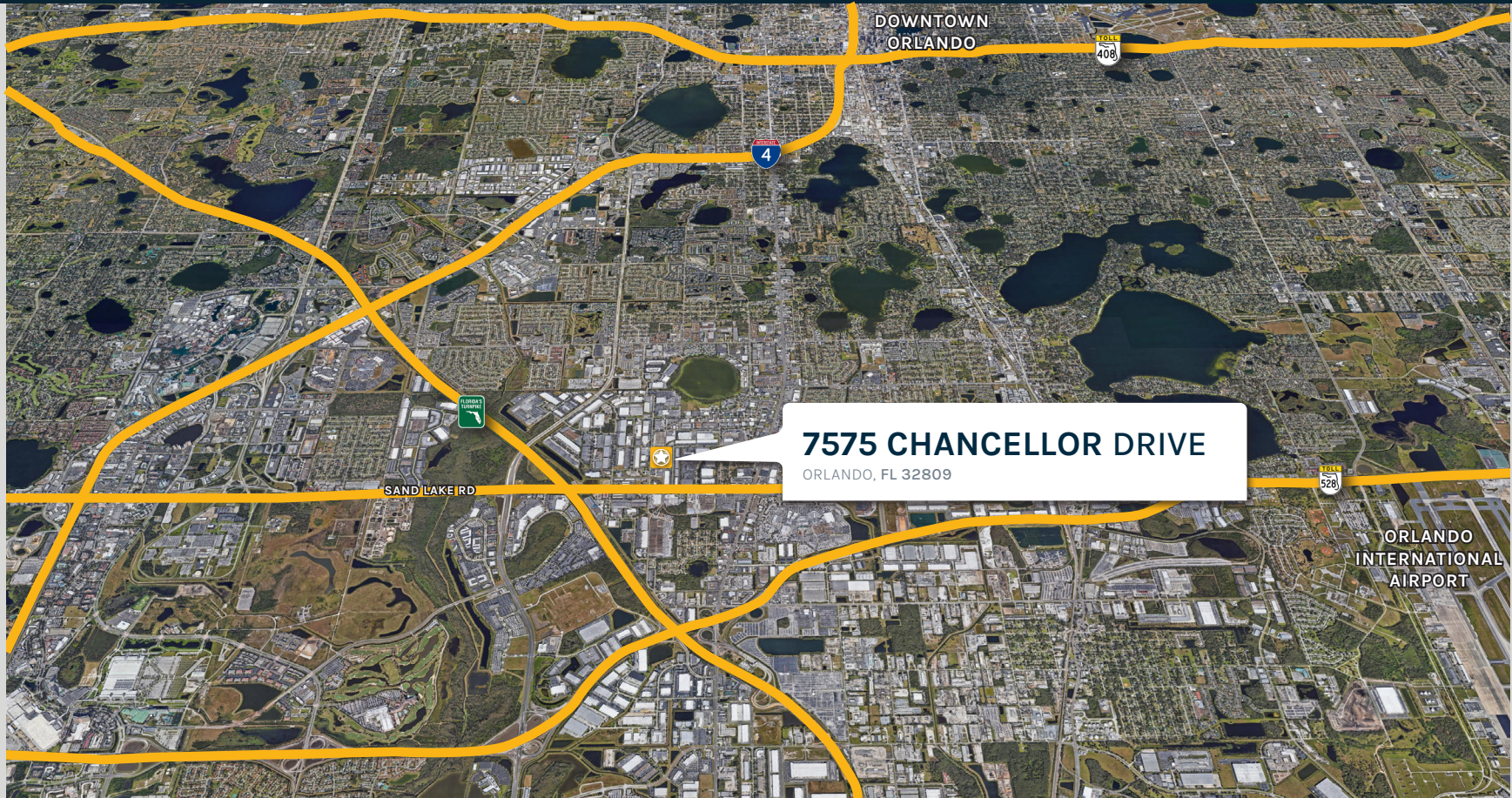
Spec Office Plan



ARES
INDUSTRIAL
MANAGEMENT

Location HIGHLIGHTS

- Located in Orlando Central Park
- Convenient access to Orange Blossom Trail (441)
- 2 Miles to Turnpike and SR-528
- 3.9 Miles to I-4



ARES
INDUSTRIAL
MANAGEMENT

ABOUT ARES MANAGEMENT CORPORATION

Ares Management Corporation (NYSE: ARES) is a leading global alternative investment manager offering clients complementary primary and secondary investment solutions across the credit, private equity, real estate and infrastructure asset classes. We seek to provide flexible capital to support businesses and create value for our stakeholders and within our communities. By collaborating across our investment groups, we aim to generate consistent and attractive investment returns throughout market cycles. For more information, please visit www.aresmgmt.com.



FOUNDRY
COMMERCIAL

JUSTIN RUBY, SIOR, CCIM
Partner
407-865-0311

JOEY WOODMAN
Vice President
407-748-5888



ARES
INDUSTRIAL
MANAGEMENT