

BULL CITY MARKET

621 BROAD STREET, DURHAM, NC 27705

FOR LEASE | ±725 - 1,628 SF

±725 - 1,628 SF AVAILABLE

BULL CITY MARKET | 621 BROAD STREET, DURHAM, NC 27705



PROPERTY FEATURES

- Bull City Market is adjacent to Duke's East Campus (Duke University has 16,606 students).
- Anchored by the only Whole Foods Market in Durham and serves campus, downtown neighborhoods and Duke Medical Center and VA Hospital areas.
- Duke Medical is currently completing the largest hospital expansion in US history. Duke University and Medical Center has 39,525 employees.
- Durham's Ninth Street is "Durham's Greenwich Village" with a unique, walkable retail district with history and character.

DEMOGRAPHICS

1 MILE RADIUS

	17,085 ESTIMATED POPULATION 2020
	29.5 AVERAGE AGE
	\$362,278 MEDIAN HOME VALUE 2020
	8,150 TOTAL EMPLOYEES
	\$69,167 AVG HOUSEHOLD INCOME

3 MILE RADIUS

	103,537 ESTIMATED POPULATION 2020
	33.3 AVERAGE AGE
	\$259,174 MEDIAN HOME VALUE 2020
	76,600 TOTAL EMPLOYEES
	\$65,922 AVG HOUSEHOLD INCOME

5 MILE RADIUS

	185,416 ESTIMATED POPULATION 2020
	35.0 AVERAGE AGE
	\$242,990 MEDIAN HOME VALUE 2020

	103,468 TOTAL EMPLOYEES
	\$54,191 AVG HOUSEHOLD INCOME

FOR MORE INFORMATION, PLEASE CONTACT:

ROSS DIACHENKO | 919.576.2683
Ross.Diachenko@foundrycommercial.com
Licensed Real Estate Broker

NOLAN MILLS IV | 919.576.2685
Nolan.Mills@foundrycommercial.com
Licensed Real Estate Broker

FOUNDRY
COMMERCIAL

Although the information contained herein was provided by sources believed to be reliable, Foundry Commercial makes no representation, expressed or implied, as to its accuracy and said information is subject to errors, omissions or changes.

foundrycommercial.com

±725 - 1,628 SF AVAILABLE

BULL CITY MARKET | 621 BROAD STREET, DURHAM, NC 27705



FOR MORE INFORMATION, PLEASE CONTACT:

ROSS DIACHENKO | 919.576.2683

Ross.Diachenko@foundrycommercial.com

Licensed Real Estate Broker

NOLAN MILLS IV | 919.576.2685

Nolan.Mills@foundrycommercial.com

Licensed Real Estate Broker

FOUNDRY
COMMERCIAL

Although the information contained herein was provided by sources believed to be reliable, Foundry Commercial makes no representation, expressed or implied, as to its accuracy and said information is subject to errors, omissions or changes.

foundrycommercial.com

±725 - 1,628 SF AVAILABLE

BULL CITY MARKET | 621 BROAD STREET, DURHAM, NC 27705



FOR MORE INFORMATION, PLEASE CONTACT:

ROSS DIACHENKO | 919.576.2683

Ross.Diachenko@foundrycommercial.com

Licensed Real Estate Broker

NOLAN MILLS IV | 919.576.2685

Nolan.Mills@foundrycommercial.com

Licensed Real Estate Broker

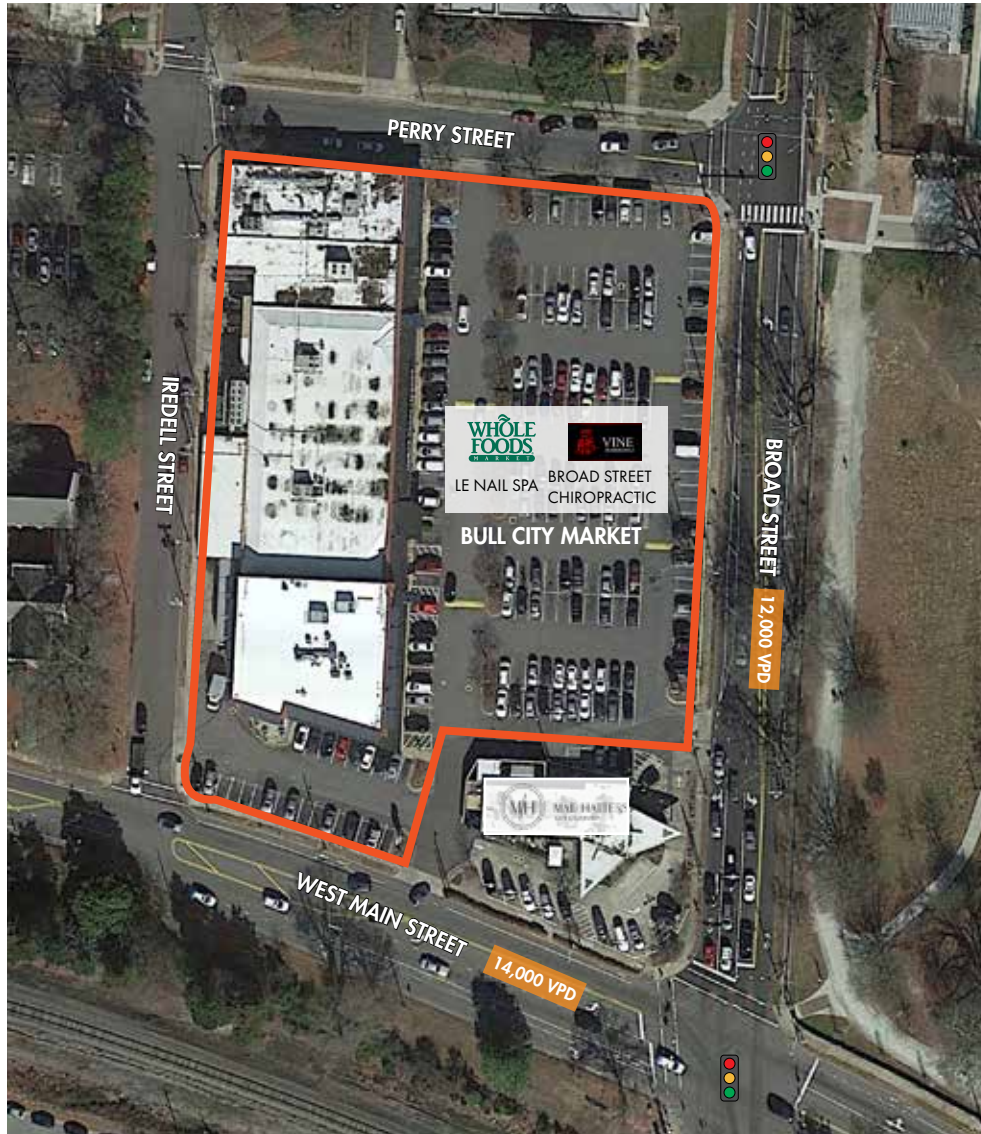
FOUNDRY
COMMERCIAL

Although the information contained herein was provided by sources believed to be reliable, Foundry Commercial makes no representation, expressed or implied, as to its accuracy and said information is subject to errors, omissions or changes.

foundrycommercial.com

±725 - 1,628 SF AVAILABLE

BULL CITY MARKET | 621 BROAD STREET, DURHAM, NC 27705



FOR MORE INFORMATION, PLEASE CONTACT:

ROSS DIACHENKO | 919.576.2683

Ross.Diachenko@foundrycommercial.com

Licensed Real Estate Broker

NOLAN MILLS IV | 919.576.2685

Nolan.Mills@foundrycommercial.com

Licensed Real Estate Broker

Although the information contained herein was provided by sources believed to be reliable, Foundry Commercial makes no representation, expressed or implied, as to its accuracy and said information is subject to errors, omissions or changes.

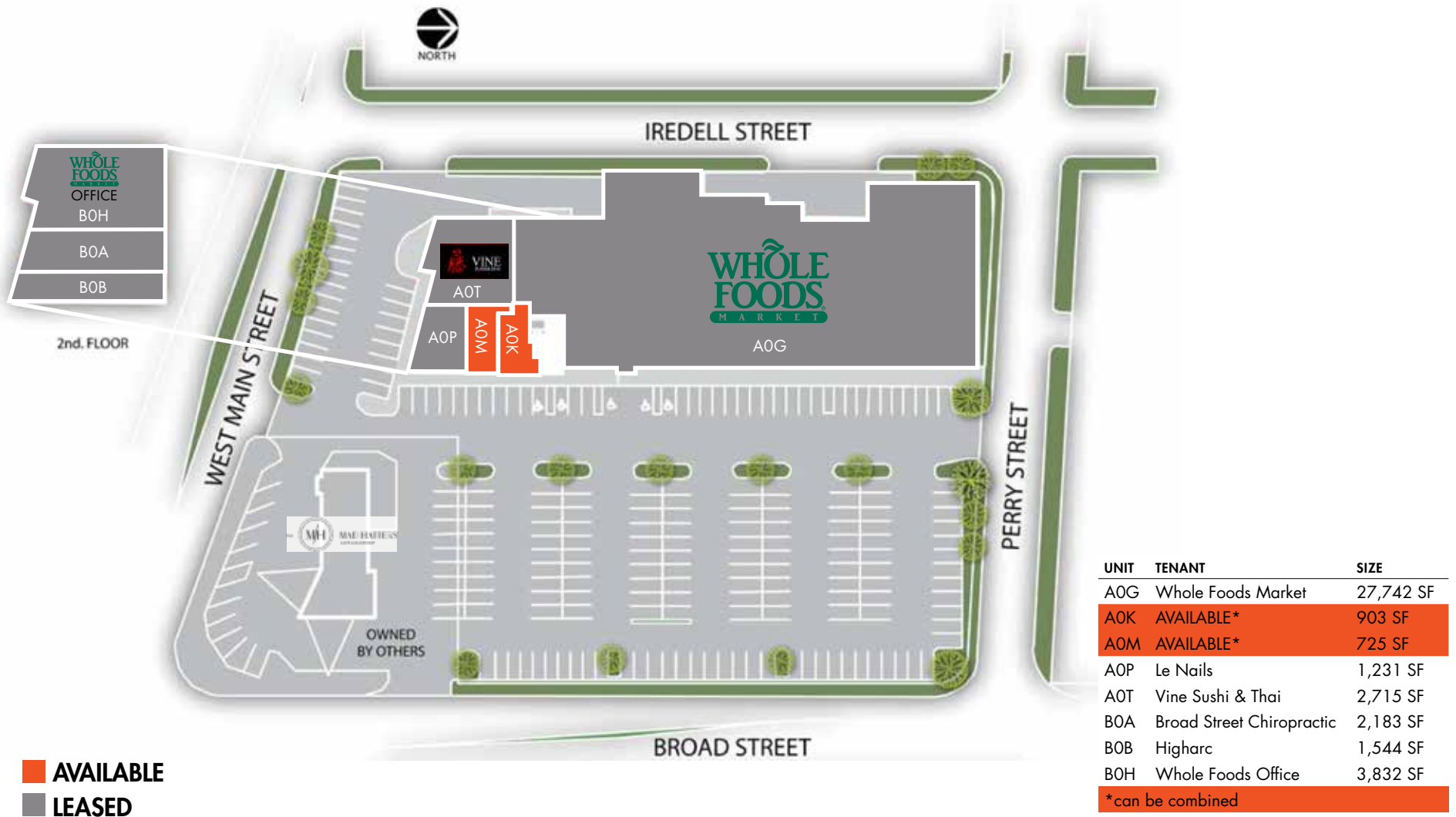
FOUNDRY
COMMERCIAL

foundrycommercial.com

±725 - 1,628 SF AVAILABLE

BULL CITY MARKET | 621 BROAD STREET, DURHAM, NC 27705

SITE PLAN



FOR MORE INFORMATION, PLEASE CONTACT:

ROSS DIACHENKO | 919.576.2683

Ross.Diachenko@foundrycommercial.com

Licensed Real Estate Broker

NOLAN MILLS IV | 919.576.2685

Nolan.Mills@foundrycommercial.com

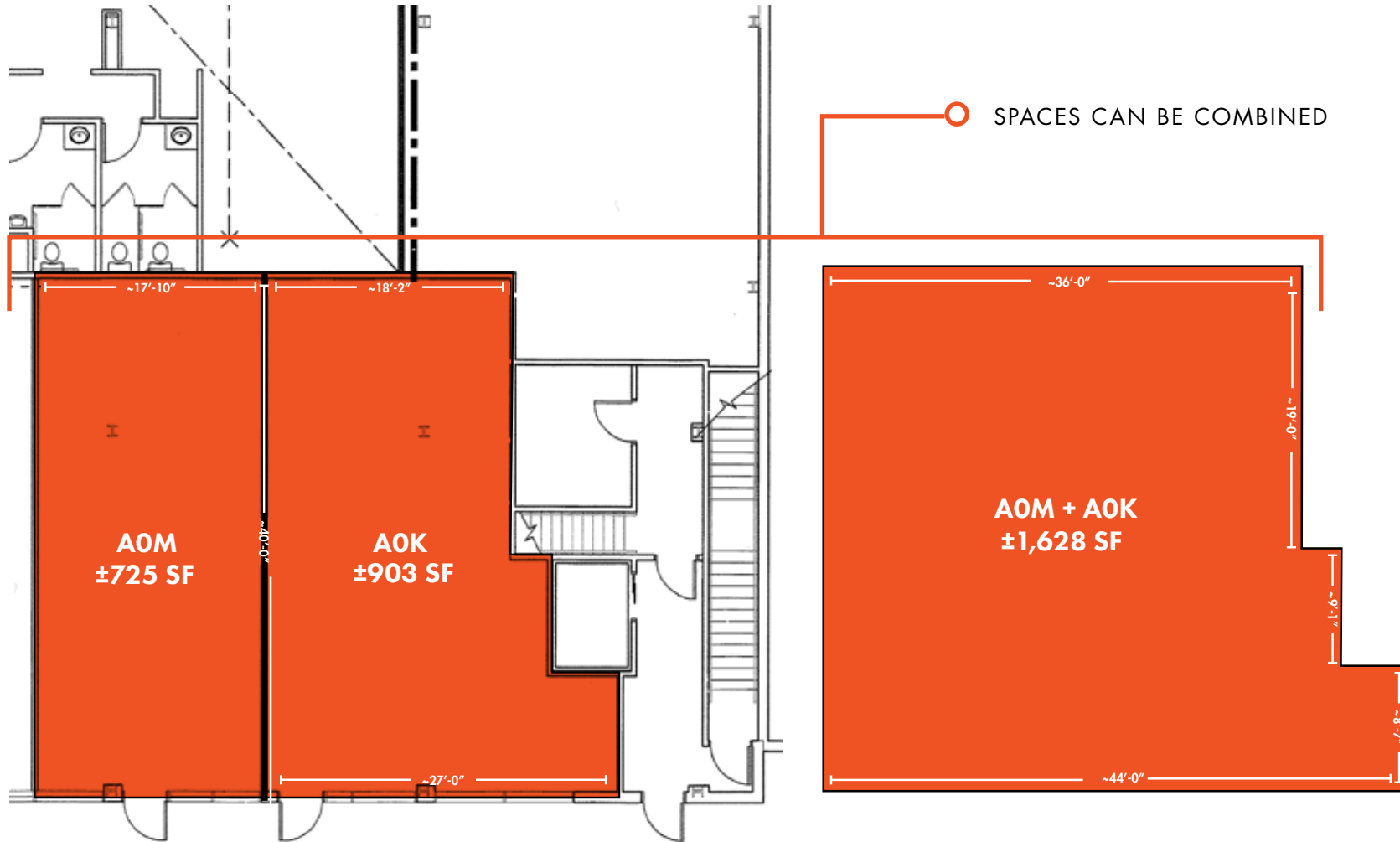
Licensed Real Estate Broker

FOUNDRY
COMMERCIAL

Although the information contained herein was provided by sources believed to be reliable, Foundry Commercial makes no representation, expressed or implied, as to its accuracy and said information is subject to errors, omissions or changes.

foundrycommercial.com

FLOOR PLAN



Although the measurements contained herein were provided by sources believed to be reliable, Foundry Commercial makes no representation, expressed or implied, as to their accuracy and said measurements are subject to errors, omissions or changes.

FOR MORE INFORMATION, PLEASE CONTACT:

ROSS DIACHENKO | 919.576.2683

Ross.Diachenko@foundrycommercial.com

Licensed Real Estate Broker

NOLAN MILLS IV | 919.576.2685

Nolan.Mills@foundrycommercial.com

Licensed Real Estate Broker

FOUNDRY
COMMERCIAL

Although the information contained herein was provided by sources believed to be reliable, Foundry Commercial makes no representation, expressed or implied, as to its accuracy and said information is subject to errors, omissions or changes.

foundrycommercial.com