

FIFTH THIRD CENTER  
201 N TRYON ST, CHARLOTTE, NC 28202

FOUNDRY  
COMMERCIAL



## FIFTH THIRD CENTER

Fifth Third Center is a 691,779 square-foot, Class A office tower located in Uptown Charlotte. Constructed in 1997, the 30-story trophy tower is LEED Certified EB Silver and features highly efficient floor plates. The building offers excellent onsite amenities including Capital Grille, and Crane Coffee.

The building's parking deck offers a 1.5 per 1,000 ratio. Located two blocks from LYNX Light Rail 7<sup>th</sup> Street Station, Fifth Third Center offers unprecedented access. The building also offers extraordinary access to I-77 and I-85 and the greater Charlotte metro via the I-277 belt loop.

### BUILDING FEATURES

Class:	A
Year Built:	1997
# of Stories:	30
Parking:	1.5 per 1,000 RSF covered parking garage
Features:	ATM/banking, dry cleaning service, outdoor courtyard with patio seating, electric car charging stations, onsite ownership & management team, 24/7 key card access, complimentary WiFi in the lobby

For more information, please contact:

**MEREDITH BALL**

704-705-3864

[meredith.ball@foundrycommercial.com](mailto:meredith.ball@foundrycommercial.com)

**KARAH TANNEBERGER**

704-319-5081

[karah.tanneberger@foundrycommercial.com](mailto:karah.tanneberger@foundrycommercial.com)

2151 Hawkins St  
Suites 1000  
Charlotte, NC 28203

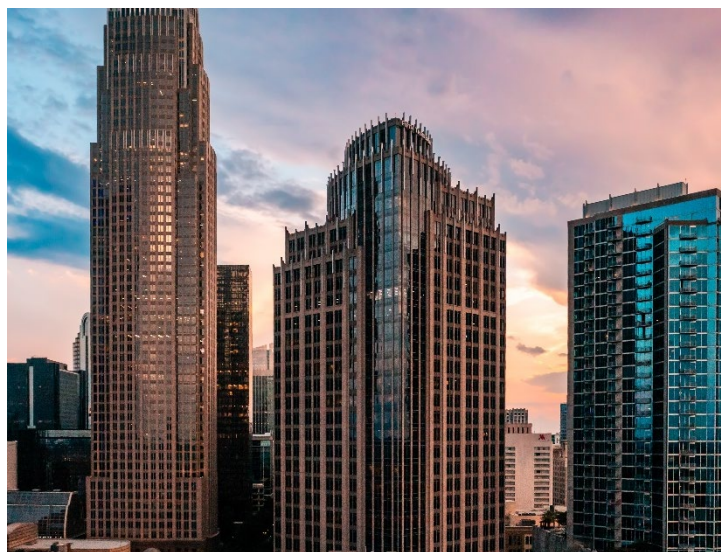
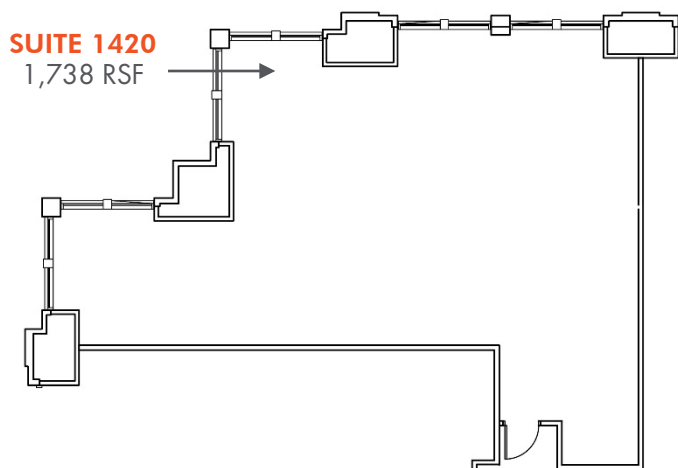
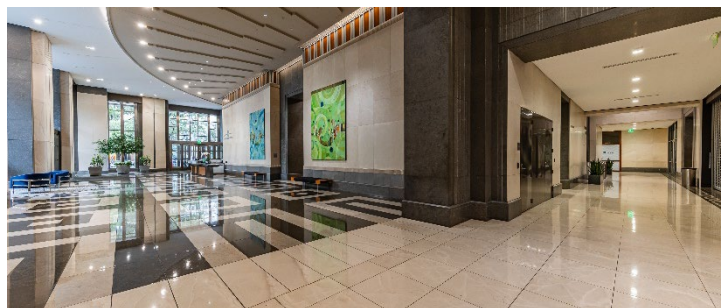
Although the information contained herein was provided by sources believed to be reliable, Foundry Commercial makes no representation, expressed or implied, as to its accuracy and said information is subject to errors, omissions or changes.

[foundrycommercial.com](http://foundrycommercial.com)

# FIFTH THIRD CENTER

## 201 N TRYON ST, CHARLOTTE, NC 28202

SUITE	SF MIN	SF MAX	RATE
1420	1,738 RSF	1,738 RSF	\$42.00/SF
2000	10,000 RSF	24,861 RSF	\$42.00/SF
2150	3,437 RSF	3,437 RSF	\$42.00/SF
2200	24,872 RSF	24,872 RSF	\$42.00/SF



**SUITE 2000**  
24,861 RSF



**SUITE 2200**  
24,872 RSF



For more information, please contact:

**MEREDITH BALL**

704-705-3864

meredith.ball@foundrycommercial.com

**KARAH TANNEBERGER**

704-319-5081

karah.tanneberger@foundrycommercial.com

**FOUNDRY**  
COMMERCIAL

2151 Hawkins St  
Suites 1000  
Charlotte, NC 28203

[foundrycommercial.com](http://foundrycommercial.com)

Although the information contained herein was provided by sources believed to be reliable, Foundry Commercial makes no representation, expressed or implied, as to its accuracy and said information is subject to errors, omissions or changes.