



# LAKESIDE

LOGISTICS

**90% OPEN SPACE INDUSTRIAL PARK**  
LOCATED ALONG THE I-4 CORRIDOR

**FOUNDRY**  
COMMERCIAL

PLANT CITY, FL

# LOCATION OVERVIEW

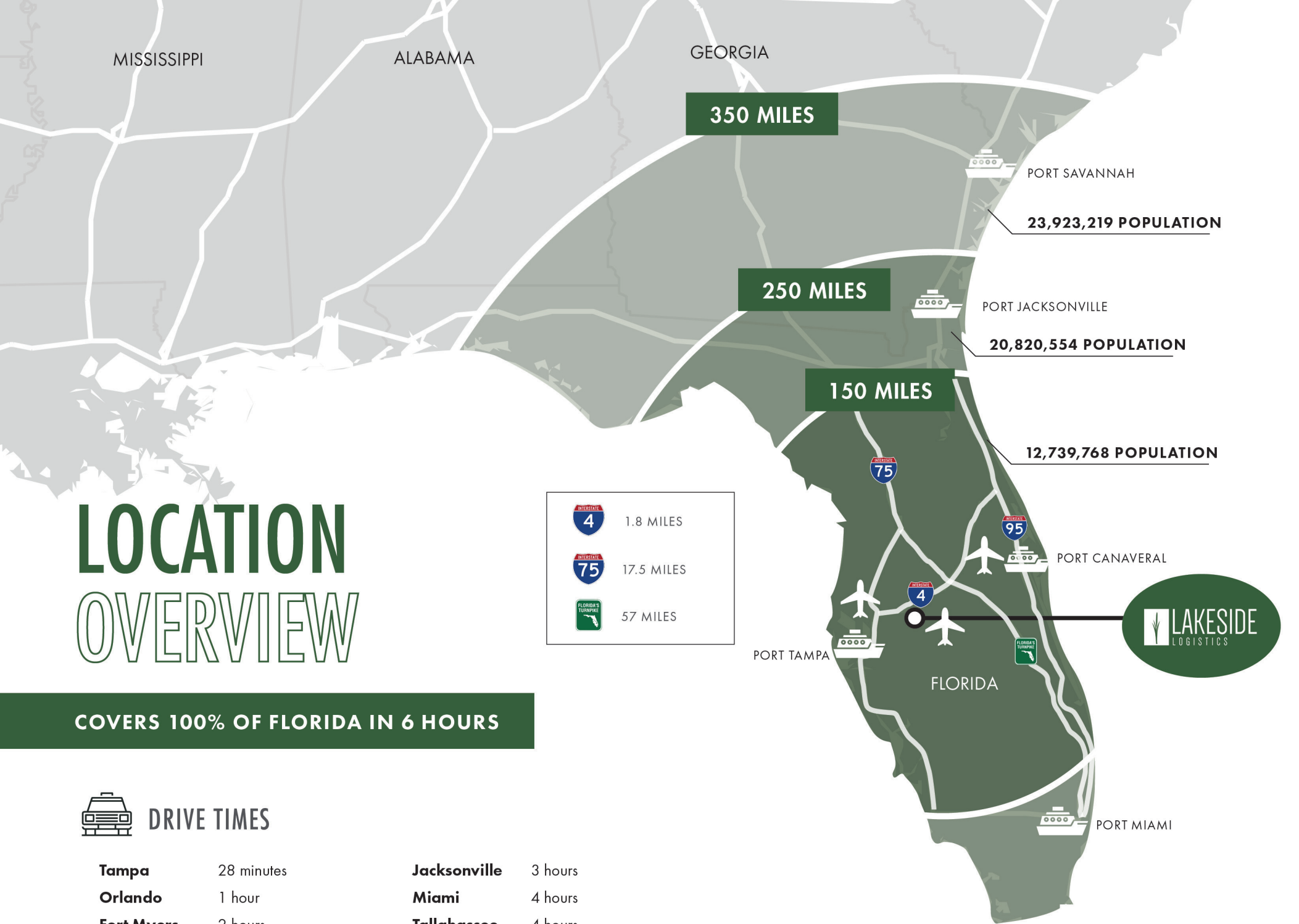
COVERS 100% OF FLORIDA IN 6 HOURS



## DRIVE TIMES

**Tampa** 28 minutes  
**Orlando** 1 hour  
**Fort Myers** 2 hours

**Jacksonville** 3 hours  
**Miami** 4 hours  
**Tallahassee** 4 hours



# I-4 CORRIDOR OVERVIEW



**13 FORTUNE 500**

COMPANIES HAVE  
ABSORBED 25 MILLION SF  
OF INDUSTRIAL INVENTORY  
ALONG THE I-4 CORRIDOR



**OVER 5M**

RESIDENTS CAN BE  
REACHED WITHIN 60  
MINUTES OF LAKESIDE  
LOGISTICS



**33,991**

QUALIFIED TRANSPORTATION  
AND MATERIAL MOVING  
WORKERS RESIDE WITHIN 30  
MINUTES OF  
LAKESIDE LOGISTICS



**207,849**

BUSINESSES LOCATED  
WITHIN 50 MILES OF  
LAKESIDE LOGISTICS

# AMENITY MAP

## TRUCK SERVICES

1. Iron Maintenance Lakeland
2. Alert Tire Service Inc.
3. Breslin Auto Repair and Service
4. Mobil
5. Wawa
6. Speedlane
7. CircleK

## LODGING

8. Holiday Inn Express & Suites Plant City
9. Quality Inn Plant City
10. Knights Inn Plant City
11. Fairfield Inn & Suites by Marriott
12. Best Western Plus Lakeland
13. Hampton Inn Plant City

## CONVENIENCE/DINING

14. McDonald's
15. Taco Bus
16. Dunkin' Donuts
17. Wendy's
18. Firehouse 92
19. Popeyes
20. Denny's
21. Arby's
22. Culver's
23. Sonic Drive-In
24. Panera
25. Walgreens
26. Walmart
27. CVS
28. Zaxby's



PLANT CITY

LAKELAND

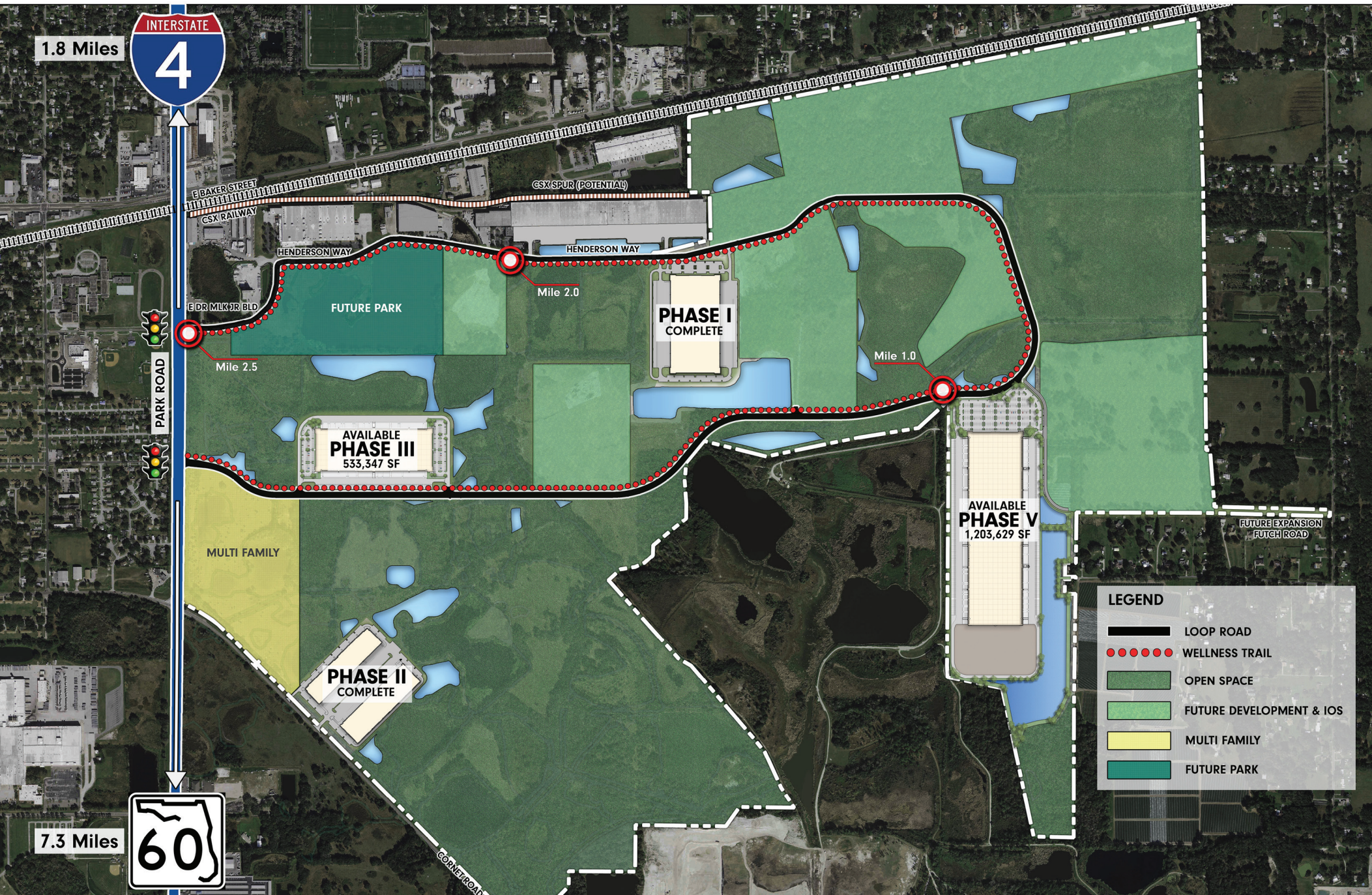
COUNTY LINE RD.

POLK PKWY

# LAKESIDE LOGISTICS SITE PLAN

900 TOTAL ACRES

90% OPEN SPACE WITHIN THE PARK





**BUILDING SPECIFICATIONS**

**SF AVAILABLE:** 266,673 - 533,347 SF

**CLEAR HEIGHT:** 36'

**BUILDING TYPE:** Cross Loading

**COLUMN SPACING:** 50' (w) x 47.6" (d)

**CONCRETE SLAB:** 7" reinforced

**OFF DOCK TRAILER DROPS:** 100 (12'x55')

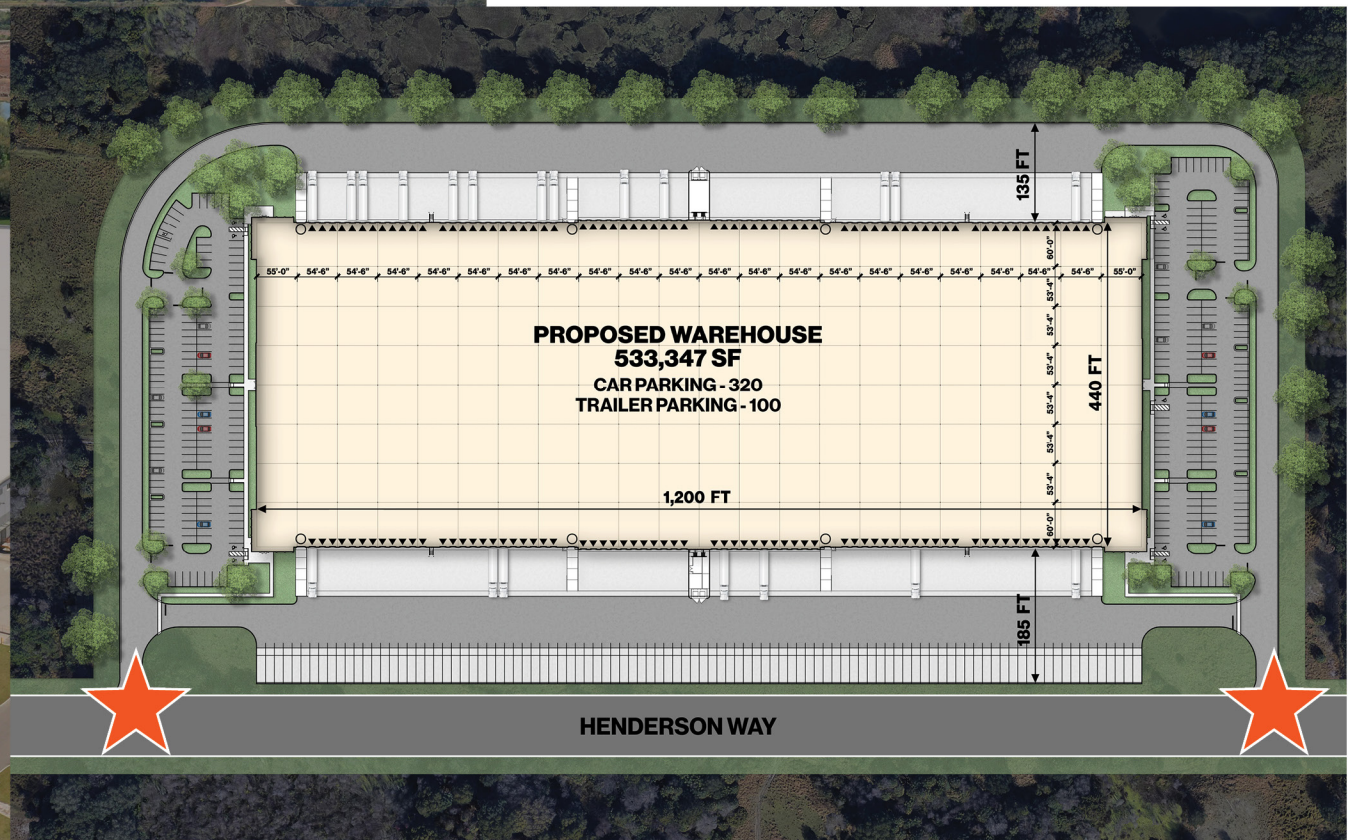
**DOCK DOORS:** 140 total, 70 per side

**DRIVE-IN DOORS:** 4 (per side)

**PARKING SPACES:** 320

PHASE III AVAILABLE FOR LEASE | 533,347 SF AVAILABLE

**PHASE III**  
FLOOR PLAN



ACCESS POINTS

**533,347 SF**  
AVAILABLE Q3 2024



# LAKE SIDE

LOGISTICS

JUSTIN RUBY, SIOR, CCIM

[JUSTIN.RUBY@FOUNDRYCOMMERCIAL.COM](mailto:JUSTIN.RUBY@FOUNDRYCOMMERCIAL.COM)

407.865.0311

CAITLIN QUINLAN

[CAITLIN.QUINLAN@FOUNDRYCOMMERCIAL.COM](mailto:CAITLIN.QUINLAN@FOUNDRYCOMMERCIAL.COM)

540.550.2549

TRAVIS HAMMOND

[TRAVIS.HAMMOND@FOUNDRYCOMMERCIAL.COM](mailto:TRAVIS.HAMMOND@FOUNDRYCOMMERCIAL.COM)

407.401.1707

JESSE DRAKE

[JESSE.DRAKE@FOUNDRYCOMMERCIAL.COM](mailto:JESSE.DRAKE@FOUNDRYCOMMERCIAL.COM)

813.449.2955

FOUNDRY  
COMMERCIAL