

MOREHEAD PLACE

521 EAST MOREHEAD STREET, CHARLOTTE, NC 28202



PROPERTY FEATURES

- Class A, 5-story 107,606 SF building
- Building was fully renovated in 2020 with new lobby, renovated restrooms, updated corridors, & brand new amenity center
- Superb location across from Dowd YMCA; within walking distance to LYNX Blue Line light rail stop
- 24/7 onsite security
- Outdoor seating with unparalleled skyline views

BUILDING FEATURES

BUILDING SIZE	± 107,606 SF
AVAILABLE	± 3,669 RSF
LEASE RATE	\$46.00 FS
YEAR BUILT	1995

FOR MORE INFORMATION, PLEASE CONTACT:

MEREDITH BALL
704.705.3864
meredith.ball@foundrycommercial.com

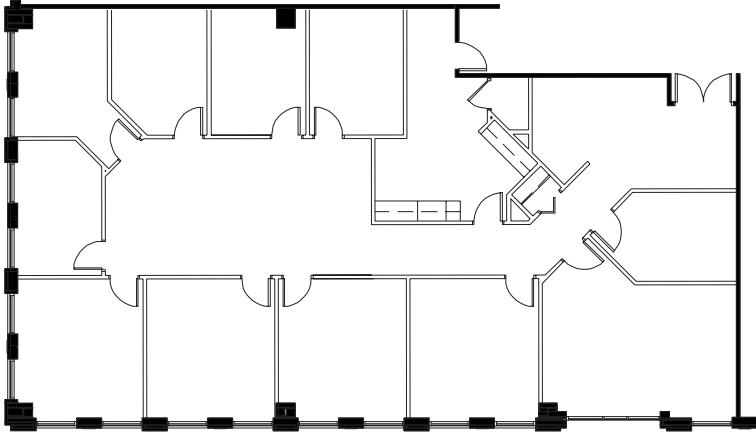
KARAH TANNEBERGER
704.319.5081
karah.tanneberger@foundrycommercial.com

Although the information contained herein was provided by sources believed to be reliable, Foundry Commercial makes no representation, expressed or implied, as to its accuracy and said information is subject to errors, omissions or changes.

FLOOR PLAN

SUITE 405

± 3,669 RSF AVAILABLE (03/01/2025)



FOR MORE INFORMATION, PLEASE CONTACT:

MEREDITH BALL
704.705.3864
meredith.ball@foundrycommercial.com

KARAH TANNEBERGER
704.319.5081
karah.tanneberger@foundrycommercial.com

FOUNDRY
COMMERCIAL

Although the information contained herein was provided by sources believed to be reliable, Foundry Commercial makes no representation, expressed or implied, as to its accuracy and said information is subject to errors, omissions or changes.

foundrycommercial.com