

PLUG & PLAY SUBLEASE AVAILABLE

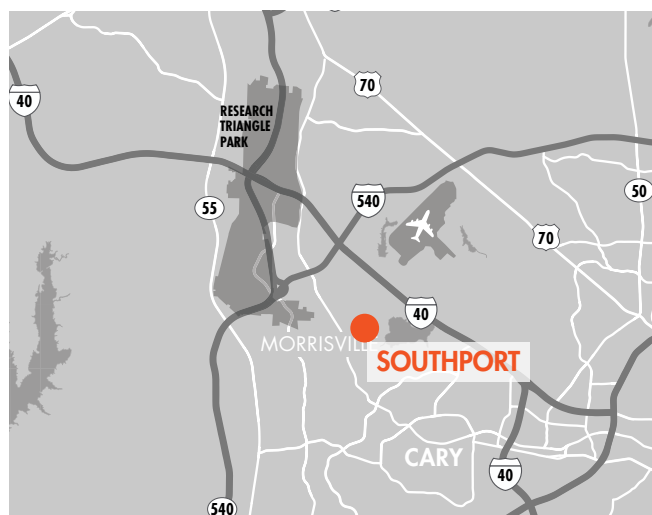
FOUNDRY
COMMERCIAL

CLASS A
OFFICE SPACE

SOUTHPORT INNOVATION CENTER
175 SOUTHPORT DRIVE, SUITE 900
MORRISVILLE, NORTH CAROLINA 27560

PROPERTY OVERVIEW

- 11,370 SF
- Rate Negotiable
- Master Lease Expires 5/31/28
- Fully Conditioned
- One (1) dock-high door



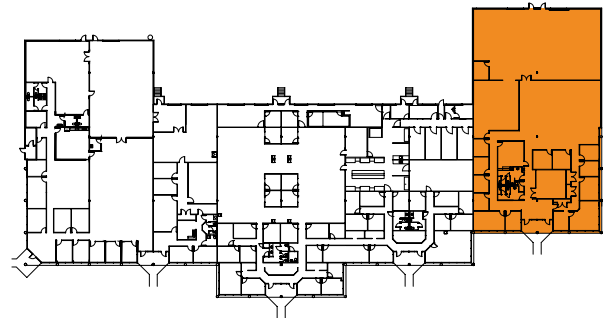
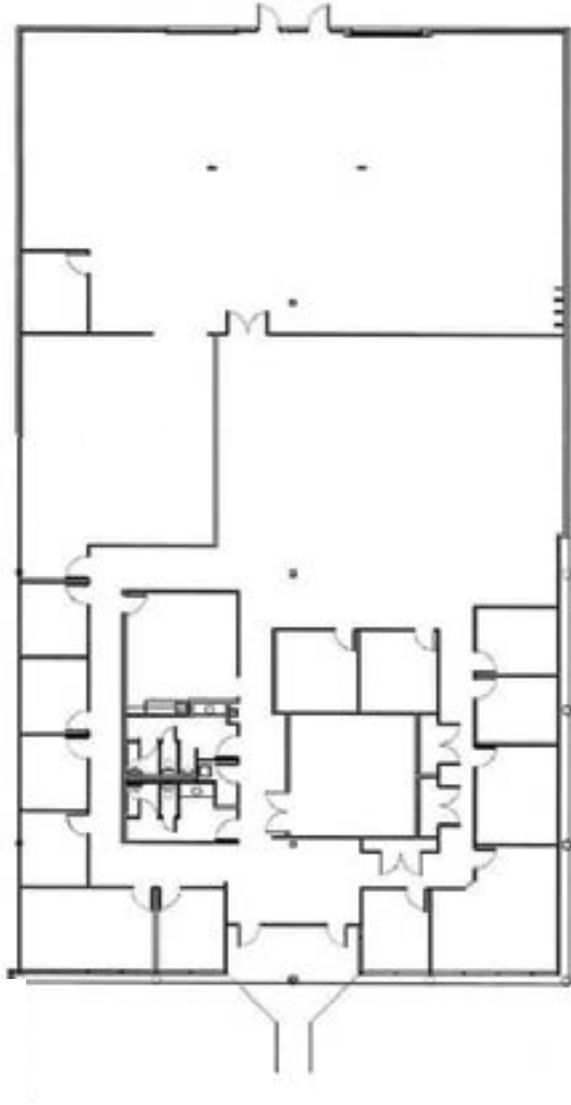
±11,370 SQUARE FEET AVAILABLE

SOUTHPORT INNOVATION CENTER

OFFICE SPACE FOR SUBLEASE

FLOOR PLAN

SUITE 900 | ±11,370 RSF



PATRICK BLACKLEY
Senior Vice President
(919) 274-9323
patrick.blackley@foundrycommercial.com

JANE DOGGETT, CCIM
Market Leader
(919) 625-8828
jane.doggett@foundrycommercial.com

JOHN KELLY, SIOR
Principal, Brokerage Services
(919) 987-1005
john.kelly@foundrycommercial.com

FOUNDRY
COMMERCIAL

2301 Sugar Bush Road, Suite 220
Raleigh, NC 27612

foundrycommercial.com

Although the information contained herein was provided by sources believed to be reliable, Foundry Commercial makes no representation, expressed or implied, as to its accuracy and said information is subject to errors, omissions or changes.

SOUTHPORT INNOVATION CENTER

OFFICE SPACE FOR SUBLEASE

ON-SITE AMENITIES



- Picnic Areas
- Lake Crabtree Park
- Fitness Center
- Electric Charging Station
- On-Site Management Office
- Access to Lake Crabtree Walking Trail
- Food Trucks & Car Detail
- The Union Amenity Center
- Training Center
- Village Deli

PATRICK BLACKLEY
Senior Vice President
(919) 274-9323
patrick.blackley@foundrycommercial.com

JANE DOGGETT, CCIM
Market Leader
(919) 625-8828
jane.doggett@foundrycommercial.com

JOHN KELLY, SIOR
Principal, Brokerage Services
(919) 987-1005
john.kelly@foundrycommercial.com

FOUNDRY
COMMERCIAL

2301 Sugar Bush Road, Suite 220
Raleigh, NC 27612

foundrycommercial.com

Although the information contained herein was provided by sources believed to be reliable, Foundry Commercial makes no representation, expressed or implied, as to its accuracy and said information is subject to errors, omissions or changes.