



FOUNDRY
COMMERCIAL

LAKE MARY, FL

TECHNOLOGY PARK

525 TECHNOLOGY PARK

±10,694 RSF AVAILABLE FOR LEASE

±10,694 RSF AVAILABLE FOR LEASE

LAKE MARY, FL

TECHNOLOGY PARK FLEX SPACE FOR LEASE

PROPERTY DESCRIPTION

Technology Park is a prestigious five-building business campus located in the heart of Lake Mary.

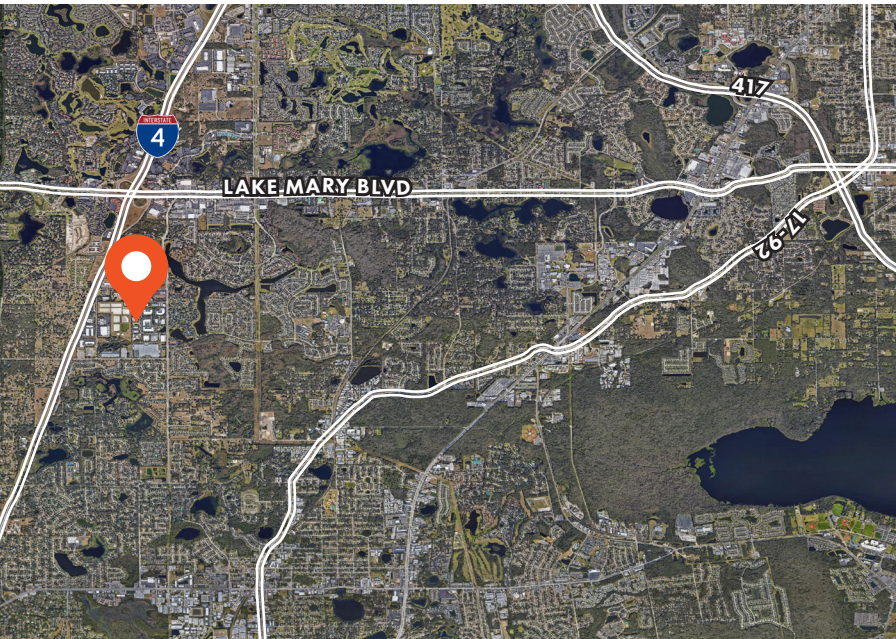
PROPERTY FEATURES

- Building signage available
- Grade level and dock high doors available
- Walk-up office allowing you to control your own work environment
- Individual HVAC units for each suite
- Located conveniently with easy access to I-4 and 417

AVAILABLE SUITE

SUITE 125

- 10,694 SF
- 1 grade level bay door



FOR MORE INFORMATION, PLEASE CONTACT:

JOHN PIETKIEWICZ | 407.540.2793

Partner

John.Pietkiewicz@foundrycommercial.com

Licensed Real Estate Broker

JUSTIN RUBY, SIOR, CCIM | 407.540.7727

Partner

Justin.Ruby@foundrycommercial.com

Licensed Real Estate Broker

Although the information contained herein was provided by sources believed to be reliable, Foundry Commercial makes no representation, expressed or implied, as to its accuracy and said information is subject to errors, omissions or changes.

FOUNDRY
COMMERCIAL

foundrycommercial.com

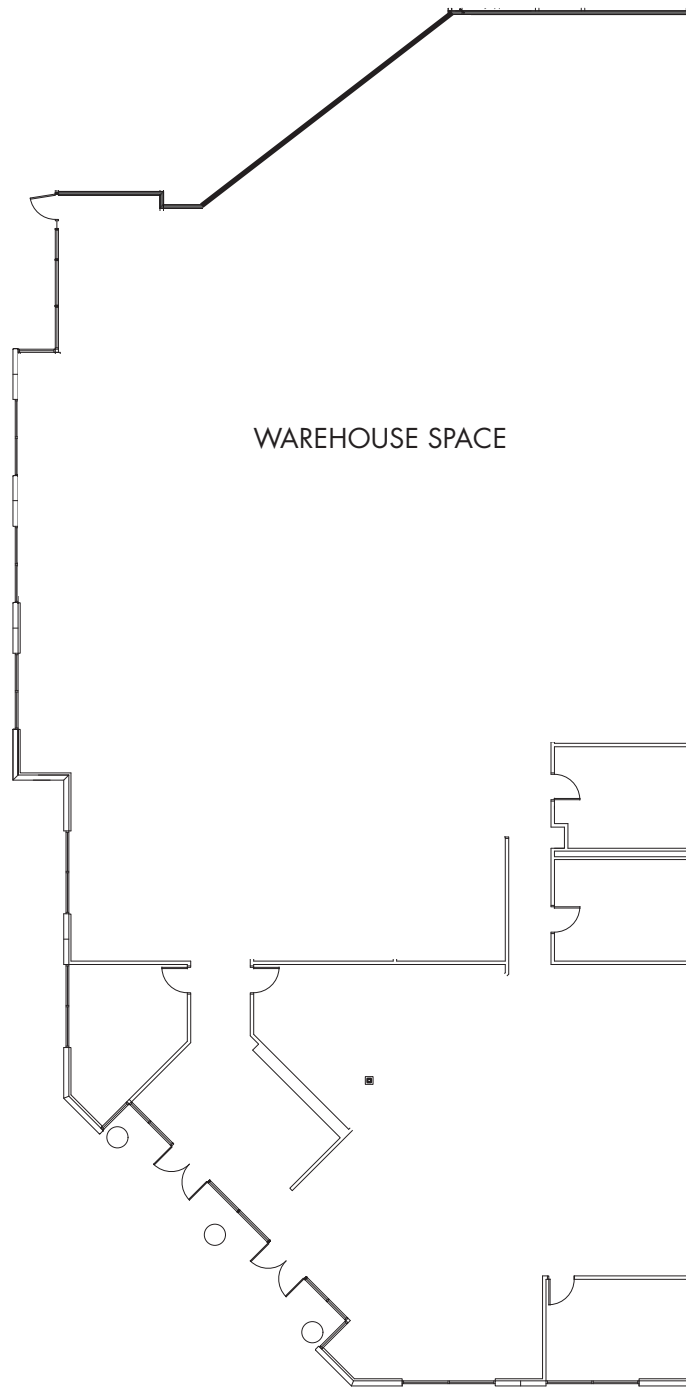
LAKE MARY, FL

±10,694 RSF AVAILABLE FOR LEASE

TECHNOLOGY PARK

BUILDING 525

SUITE 125: 10,694 RSF AVAILABLE (70% WAREHOUSE & 30% OFFICE)



FOR MORE INFORMATION, PLEASE CONTACT:

JOHN PIETKIEWICZ | 407.540.2793

Partner

John.Pietkiewicz@foundrycommercial.com

Licensed Real Estate Broker

JUSTIN RUBY, SIOR, CCIM | 407.540.7727

Partner

Justin.Ruby@foundrycommercial.com

Licensed Real Estate Broker

FOUNDry
COMMERCIAL

Although the information contained herein was provided by sources believed to be reliable, Foundry Commercial makes no representation, expressed or implied, as to its accuracy and said information is subject to errors, omissions or changes.

foundrycommercial.com

PHOTOS



FOR MORE INFORMATION, PLEASE CONTACT:

JOHN PIETKIEWICZ | 407.540.2793

Partner

John.Pietkiewicz@foundrycommercial.com

Licensed Real Estate Broker

JUSTIN RUBY, SIOR, CCIM | 407.540.7727

Partner

Justin.Ruby@foundrycommercial.com

Licensed Real Estate Broker

Although the information contained herein was provided by sources believed to be reliable, Foundry Commercial makes no representation, expressed or implied, as to its accuracy and said information is subject to errors, omissions or changes.

FOUNDRY
COMMERCIAL

foundrycommercial.com