



FOUNDRY  
COMMERCIAL

810 REID STREET EAST

WILSON, NC 27893

MIXED-USE PROPERTY FOR SALE

±5,739 SF & ±1.7 ACRES

# 810 REID STREET EAST

## MIXED-USE PROPERTY FOR SALE



Foundry Commercial is pleased to present a former church property which features a  $\pm 1.7$ -acre parcel and includes a  $\pm 2,501$  square foot church building, as well as a  $\pm 3,238$  square foot residential home. The property resides at the corner of South Reid Street East and Academy Street East across the street from the Reid Street Community Center and is in close proximity to Wilson Community College and US Highway 301 South. The property features a GR6, General Residential Medium Density zoning designation within the City of Wilson which allows for a mix of civic, educational/institutional and residential uses up to 6 dwelling units per acre and 3 stories in height. For more information please refer to the [City of Wilson Unified Development Ordinance](#).

### PROPERTY FEATURES

BUILDINGS	Church - 2,501 SF - Built 1942
	House - 3,238 SF - Built 1942
LAND SIZE	1.7 Acres
PIN #	3722-70-4060.000
TIMING	Immediately
ZONING	General Residential - Medium Density (GR6)
UTILITIES	Municipal water and sewer
LIST PRICE	\$350,000

DEMOGRAPHICS	1 MILE	3 MILES	5 MILES
2023 ESTIMATED POPULATION	6,785	29,019	51,307
2028 PROJECTED POPULATION	6,829	29,166	52,554
EST. HOUSEHOLD INCOME	\$42,294	\$68,659	\$80,641
EST. HOUSEHOLDS	2,694	11,891	21,061

### TRAFFIC COUNTS

HIGHWAY 58	10,000 VPD
HIGHWAY 301	16,000 VPD

For more information, please contact:

**KARL HUDSON IV, CCIM**  
Partner, Land Services  
(919) 987 1012  
[karl.hudson@foundrycommercial.com](mailto:karl.hudson@foundrycommercial.com)

**FOUNDRY**  
COMMERCIAL

2301 Sugar Bush Road, Suite 220  
Raleigh, NC 27612

[foundrycommercial.com](https://foundrycommercial.com)

Although the information contained herein was provided by sources believed to be reliable, Foundry Commercial makes no representation, expressed or implied, as to its accuracy and said information is subject to errors, omissions or changes.



# 810 REID STREET EAST

## MIXED-USE PROPERTY FOR SALE

### PHOTOS



For more information, please contact:

**KARL HUDSON IV, CCIM**  
Partner, Land Services  
(919) 987 1012  
[karl.hudson@foundrycommercial.com](mailto:karl.hudson@foundrycommercial.com)

Although the information contained herein was provided by sources believed to be reliable, Foundry Commercial makes no representation, expressed or implied, as to its accuracy and said information is subject to errors, omissions or changes.

**FOUNDRY**  
COMMERCIAL

2301 Sugar Bush Road, Suite 220  
Raleigh, NC 27612

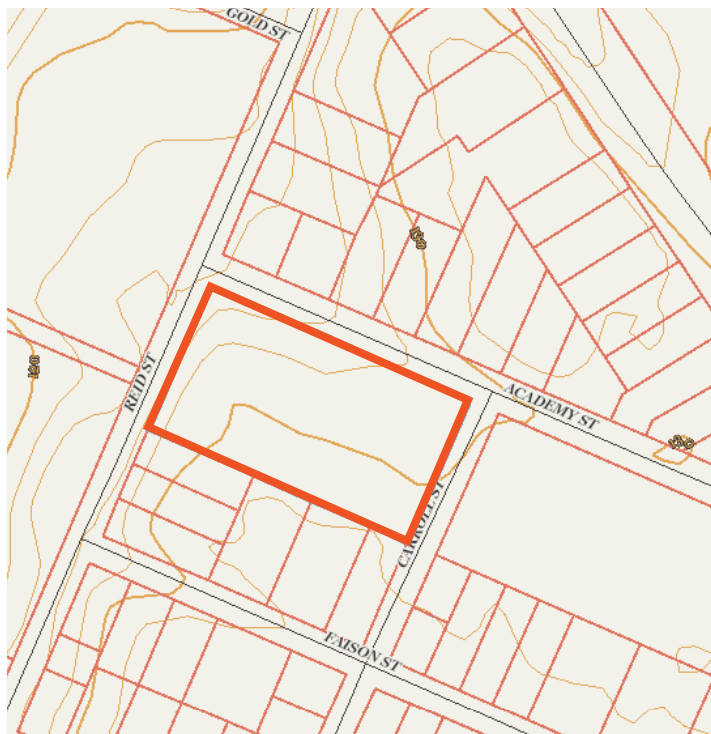
[foundrycommercial.com](http://foundrycommercial.com)



# 810 REID STREET EAST

## MIXED-USE PROPERTY FOR SALE

### TOPOGRAPHIC MAP



### ZONING MAP



For more information, please contact:

**KARL HUDSON IV, CCIM**  
Partner, Land Services  
(919) 987 1012  
[karl.hudson@foundrycommercial.com](mailto:karl.hudson@foundrycommercial.com)

Although the information contained herein was provided by sources believed to be reliable, Foundry Commercial makes no representation, expressed or implied, as to its accuracy and said information is subject to errors, omissions or changes.

**FOUNDRY**  
COMMERCIAL

2301 Sugar Bush Road, Suite 220  
Raleigh, NC 27612

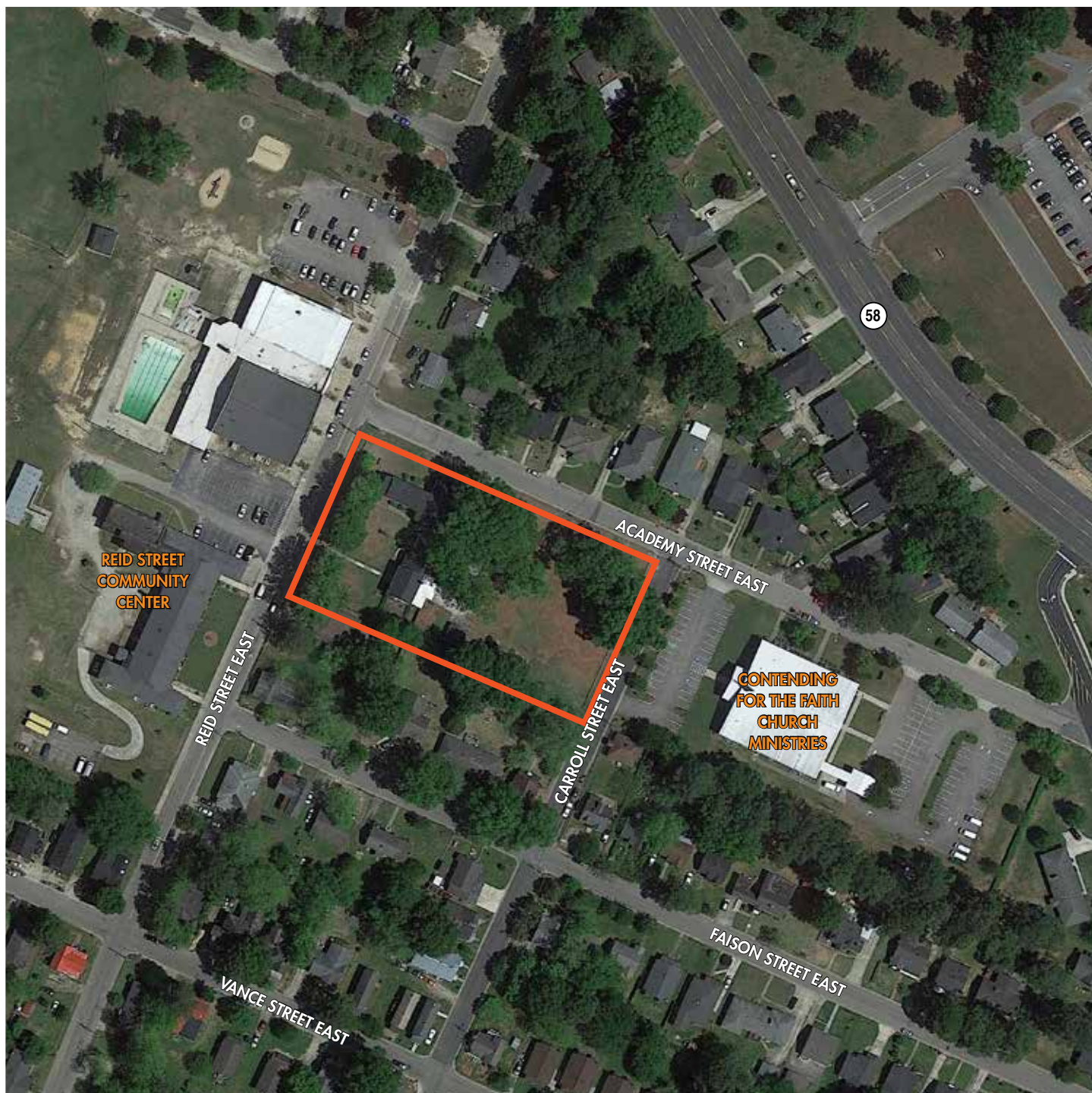
[foundrycommercial.com](http://foundrycommercial.com)



# 810 REID STREET EAST

## MIXED-USE PROPERTY FOR SALE

### AERIAL



For more information, please contact:

**KARL HUDSON IV, CCIM**  
Partner, Land Services  
(919) 987 1012  
[karl.hudson@foundrycommercial.com](mailto:karl.hudson@foundrycommercial.com)

Although the information contained herein was provided by sources believed to be reliable, Foundry Commercial makes no representation, expressed or implied, as to its accuracy and said information is subject to errors, omissions or changes.

**FOUNDry**  
COMMERCIAL

2301 Sugar Bush Road, Suite 220  
Raleigh, NC 27612

[foundrycommercial.com](http://foundrycommercial.com)



# 810 REID STREET EAST

## MIXED-USE PROPERTY FOR SALE

### AMENITIES



For more information, please contact:

**KARL HUDSON IV, CCIM**  
Partner, Land Services  
(919) 987 1012  
[karl.hudson@foundrycommercial.com](mailto:karl.hudson@foundrycommercial.com)

Although the information contained herein was provided by sources believed to be reliable, Foundry Commercial makes no representation, expressed or implied, as to its accuracy and said information is subject to errors, omissions or changes.

**FOUNDRY**  
COMMERCIAL

2301 Sugar Bush Road, Suite 220  
Raleigh, NC 27612

[foundrycommercial.com](http://foundrycommercial.com)