



# THE OFFICES

## 1170 HOWELL MILL ROAD ATLANTA

# PROPERTY OVERVIEW

Westside Provisions District is a distinctive mixed-use destination and served as the catalyst for redevelopment of the surrounding Westside district. The District features a magnetic assortment of boutique retail, showroom, and restaurant spaces as well as sophisticated office spaces and elegant condominium units. The historic heart of Westside Provisions was once the site of Atlanta's first meat-packing facility.



- 258,000 SF of retail & office space
- 94 residential condo units on-site
- Located in rapidly growing West Midtown near Georgia Tech, Westside Reservoir Park and the future Atlanta BeltLine trail
- Home to neighborhood events & programming
- Ample covered and street parking



# HISTORIC LOFT OFFICES



**BREAKFAST**

4 OPTIONS

**LUNCH**

9 OPTIONS

**DINNER**

12 OPTIONS

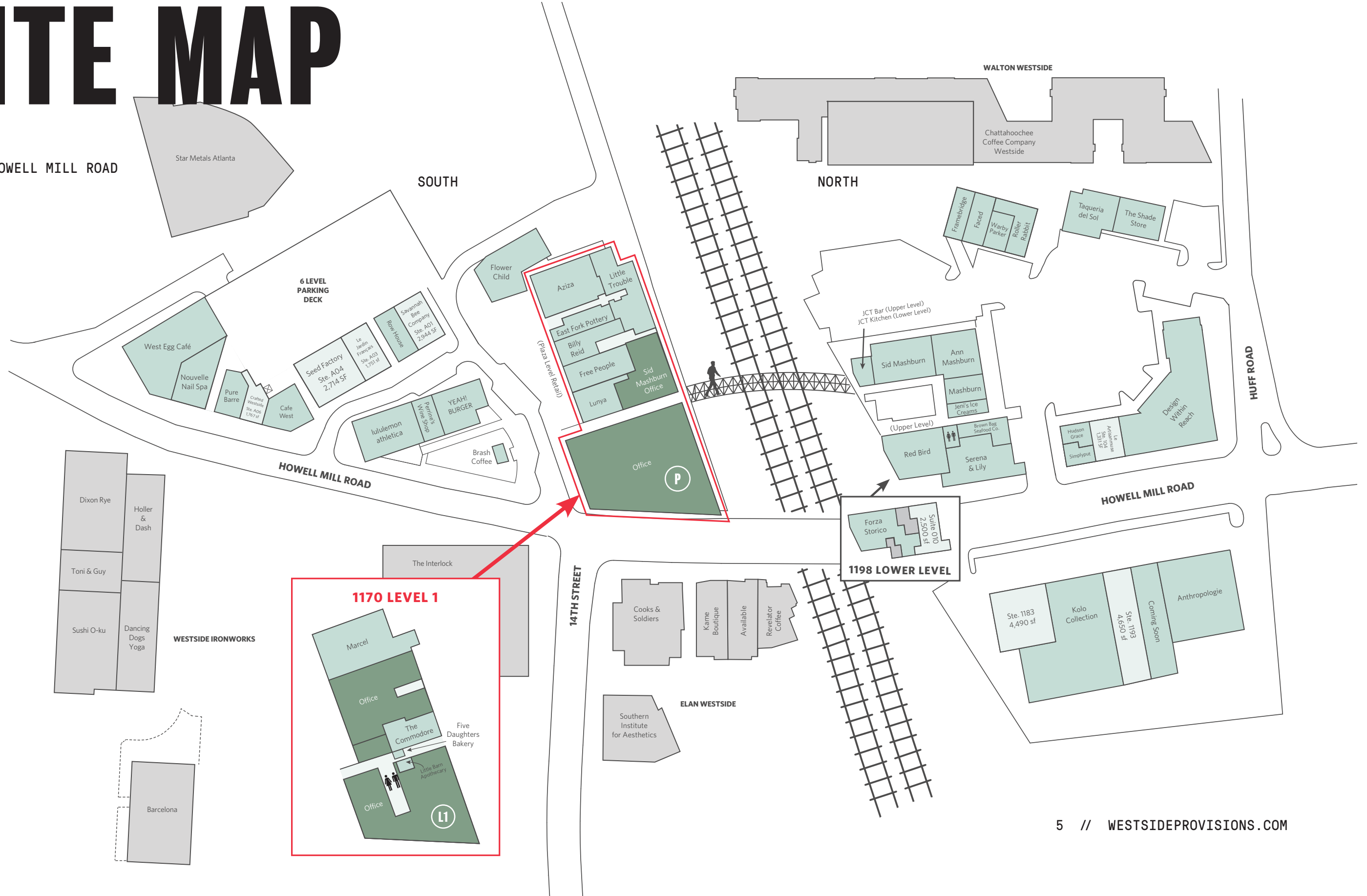
**DRINKS**

9 OPTIONS



# SITE MAP

- OFFICE
- 1170 HOWELL MILL ROAD
- RETAIL



# THE NEIGHBORHOOD

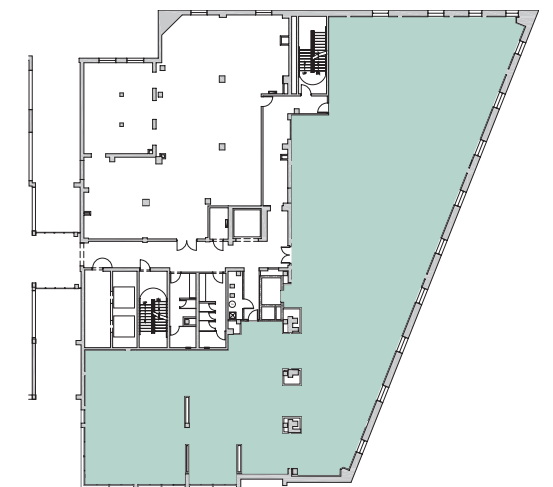
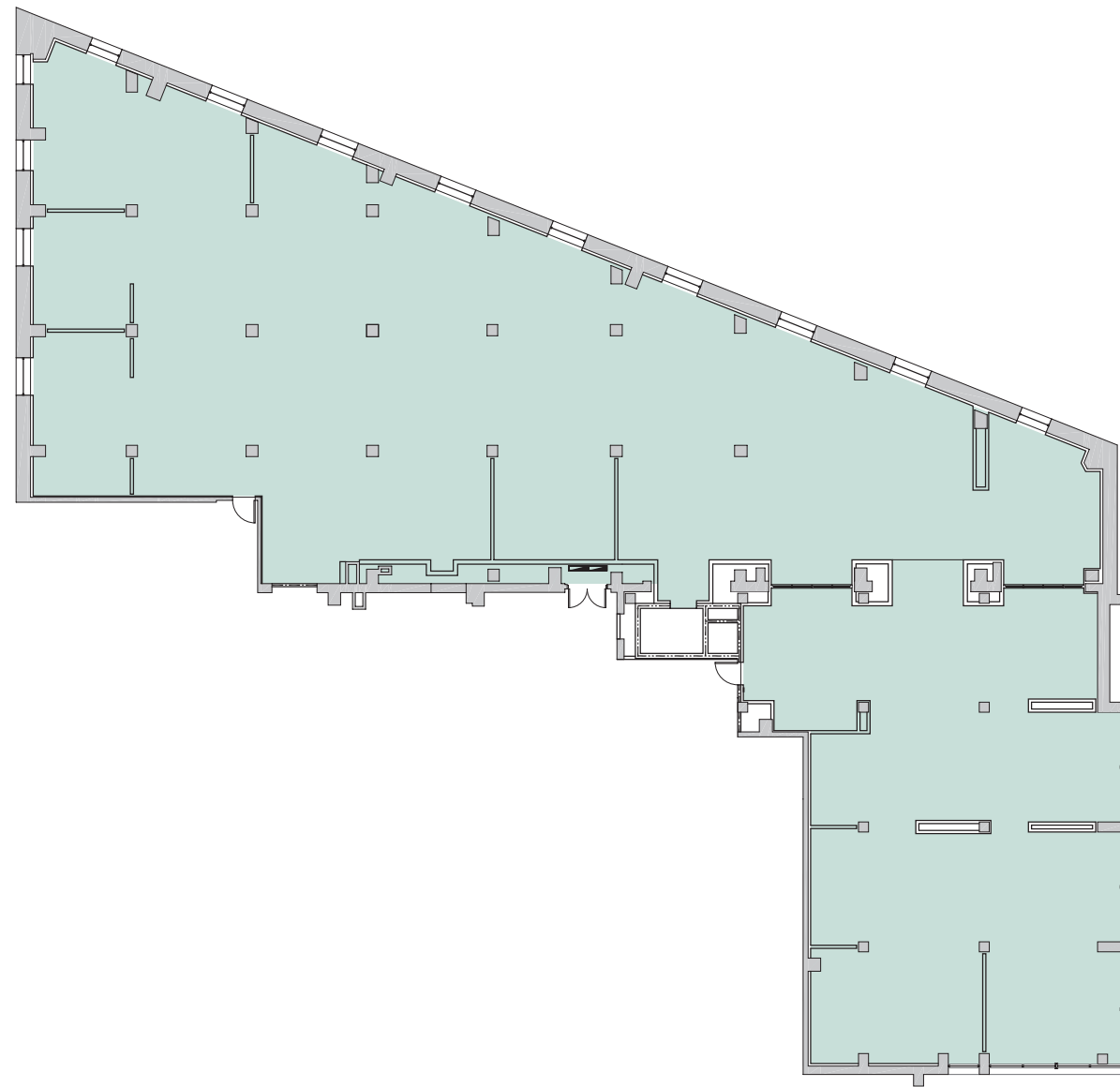
- AMENITIES AND PROJECTS OF NOTE
- MAJOR RETAIL DISTRICTS
- PARKS
- RAILWAY
- - BELTLINE TRAIL



# SUITE 201

# 10,171 SF

Space features glass  
elevator lobby entrance  
and epic Midtown views



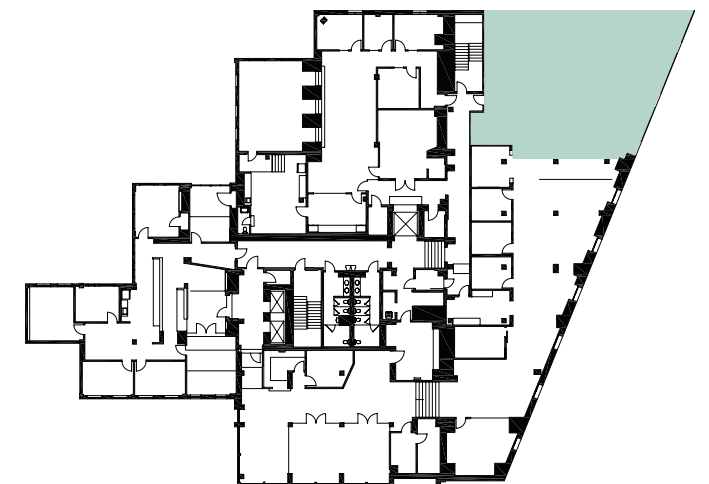
WESTSIDEPROVISIONS.COM // 7



# SUITE 310

# 3,053 SF

Customizable, corner space overlooking Howell Mill Road able to accommodate up to 25 people

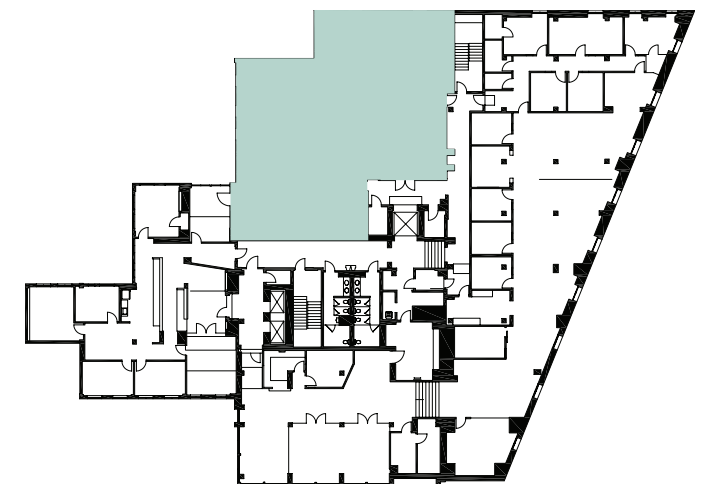
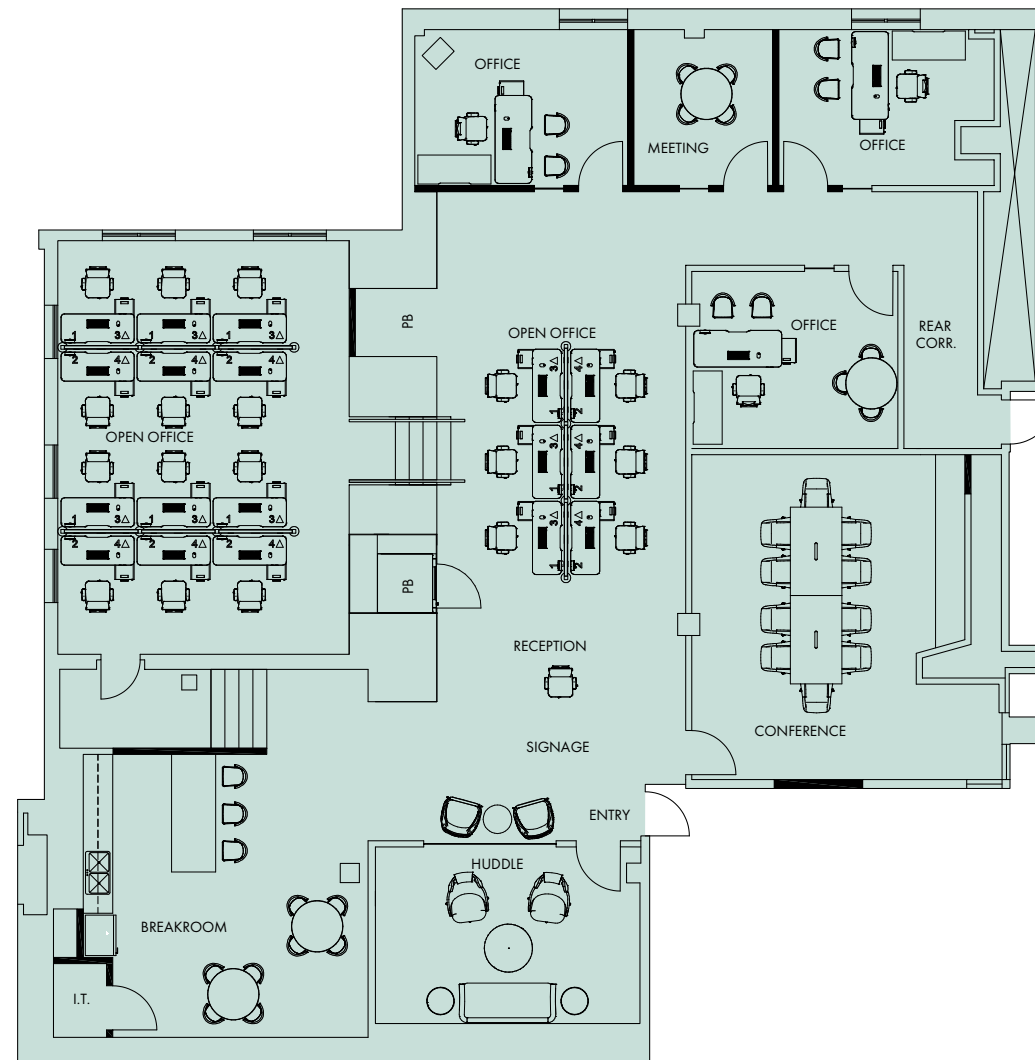




# SUITE 315

# 4,233 SF

Move-in ready, fully-built and furnished for 20 to 30 people





FOUNDRY COMMERCIAL

JOHN NEAL SCOTT | JNS@FOUNDRYCOMMERCIAL.COM | 404.218.1691

GRACE THOMPSON | GRACE.THOMPSON@FOUNDRYCOMMERCIAL.COM | 404.245.2312

SCOTTY DEMYER | SCOTTY.DEMYER@FOUNDRYCOMMERCIAL.COM | 404.229.9117

[WWW.WESTSIDEPROVISIONS.COM](http://WWW.WESTSIDEPROVISIONS.COM)