

INDUSTRIAL FOR LEASE WITH YARD

6,478 SF AVAILABLE
500 CODISCO WAY
SANFORD, FL 32771

FOUNDRY
COMMERCIAL



500 CODISCO WAY

SR 46

← 3 MIN | SR 46

↓ 3 MIN | I-4

INTERSTATE
4

UPSALA RD.

↓ 5 MIN | 417

INDUSTRIAL FOR LEASE WITH YARD

6,478 SF AVAILABLE
500 CODISCO WAY
SANFORD, FL 32771

FOUNDRY
COMMERCIAL

PROPERTY INFORMATION:

- 6,748 SF Building on 1 fully paved acre
- 1,505 SF of office (includes mezzanine office)
- \$9,000/month NNN
- \$1.75/SF Opex (estimated)
- 21'-8" clear height
- Ability to fully fence and isolate
- 8 grade level doors
- Power capacity - 200A, single phase 208V
- 17 car parks and paved outdoor storage space
- Close to I-4 and 417
- Available 2/1/24

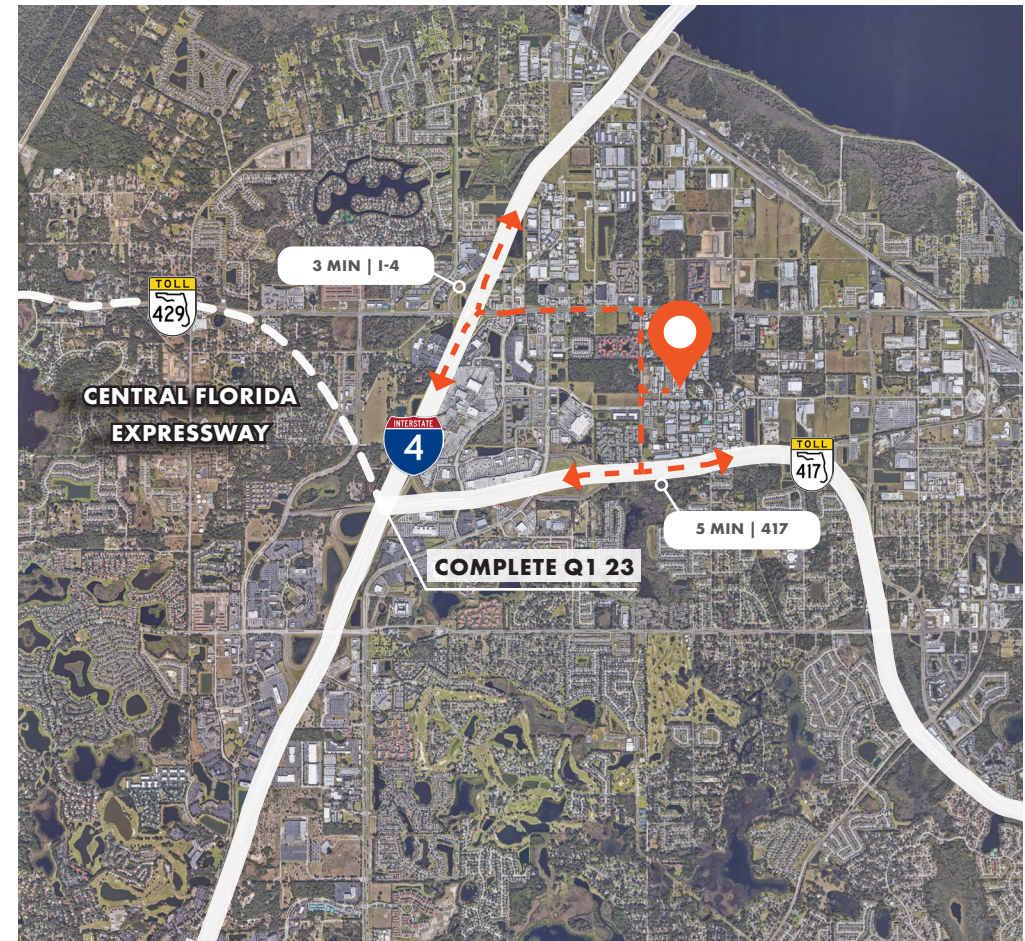
FOR MORE INFORMATION:

JOEY WOODMAN | 407.748.5888
joey.woodman@foundrycommercial.com

JUSTIN RUBY, SIOR, CCIM | 407.865.0311
justin.ruby@foundrycommercial.com

TRAVIS HAMMOND | 407.401.1707
travis.hammond@foundrycommercial.com

500 CODISCO WAY 6,478 SF

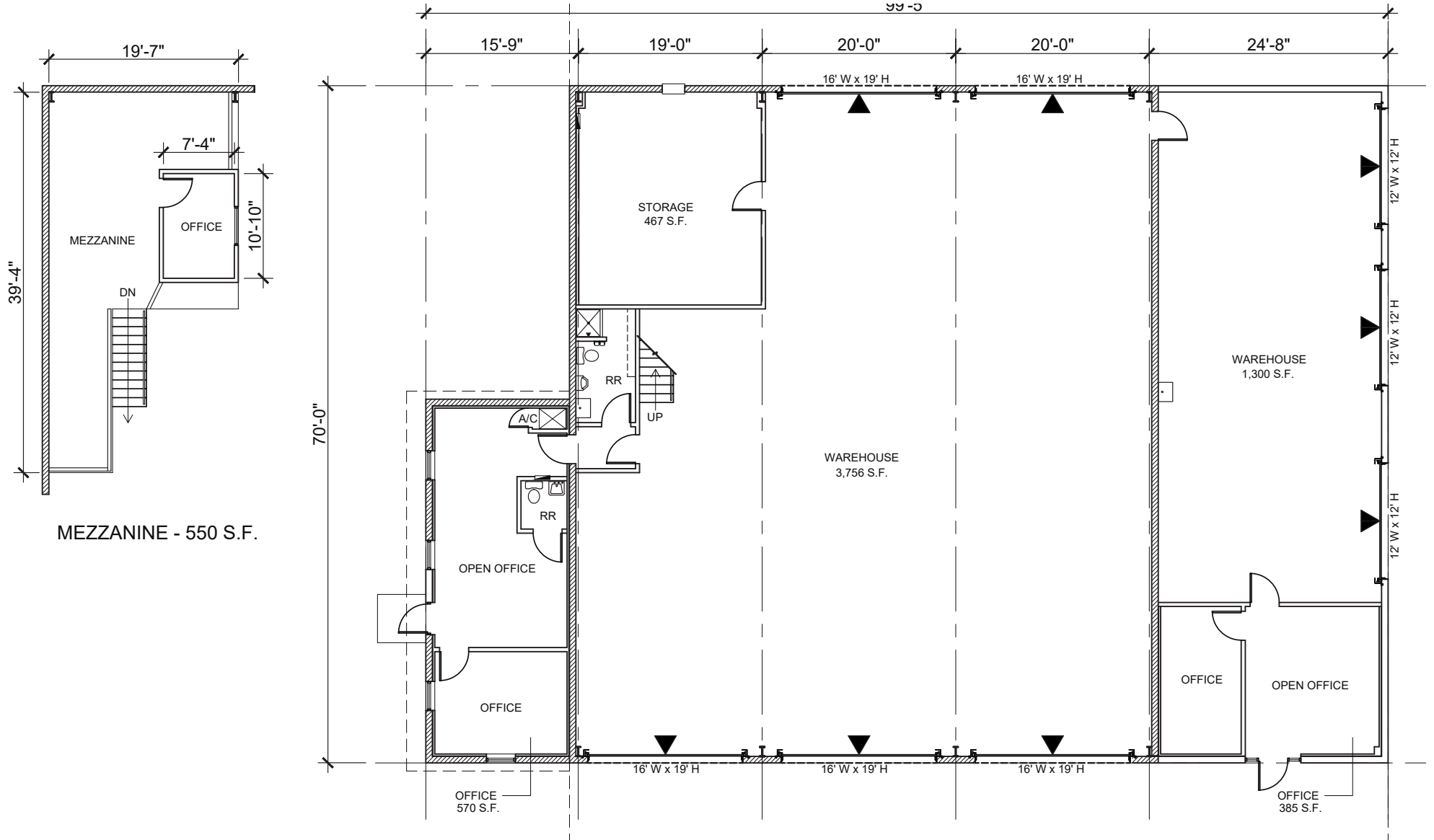


INDUSTRIAL FOR LEASE WITH YARD

6,478 SF AVAILABLE
500 CODISCO WAY
SANFORD, FL 32771

FOUNDRY
COMMERCIAL

BUILDING FLOOR PLAN



INDUSTRIAL FOR LEASE WITH YARD

6,478 SF AVAILABLE
500 CODISCO WAY
SANFORD, FL 32771

FOUNDRY
COMMERCIAL

BUILDING PHOTOS

