



FOUNDRY  
COMMERCIAL

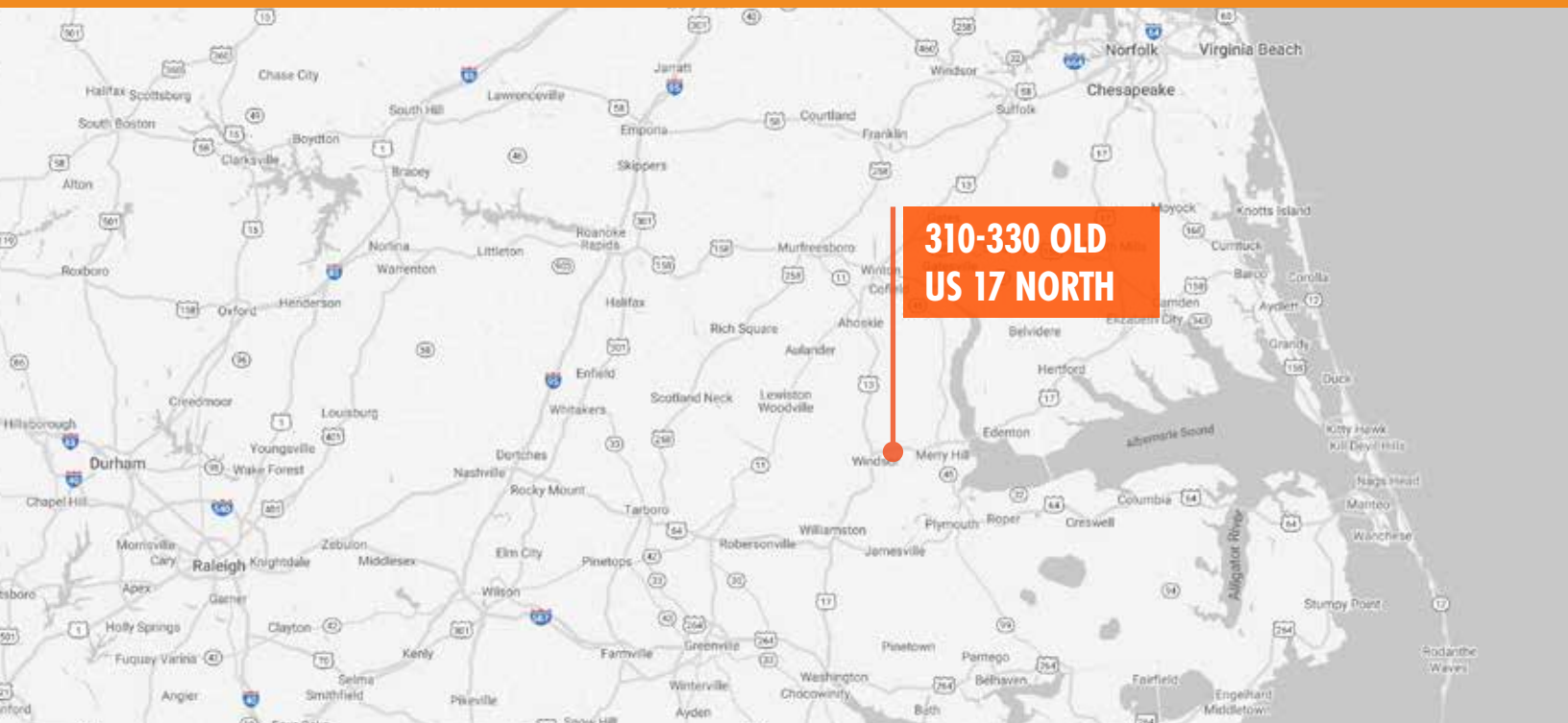
310-330 OLD US 17 NORTH

**WINDSOR, NORTH CAROLINA 27983**

AGRICULTURAL LAND FOR SALE  
±21.13 ACRES

# 310-330 OLD US 17 NORTH

## AGRICULTURAL LAND FOR SALE



Foundry Commercial, LLC is pleased to present ±21.13 acres of rural agricultural land for sale located at 310-330 Old US 17 North in Windsor, Bertie County, North Carolina.

- Over 1,180 feet of frontage along Old US 17
- Five minutes/3.5 miles to Downtown Windsor
- Located within the Bertie County Traditional Growth Center
- Great agricultural, timber, recreational tract
- No zoning classification, however, is subject to the following ordinances:
  - Watershed Protection
  - Development Agreement
  - Subdivision
  - Solid Waste Management

[Link to Bertie County Zoning Information](#)

### PROPERTY FEATURES

LAND SIZE	±21.13 acres
PARCEL ID	6822-28-9412
LIST PRICE	\$73,500 (\$3,500/acre)

### DEMOGRAPHICS

	1 MILE	3 MILES	5 MILES
2023 ESTIMATED POPULATION	186	2,362	4,900
2028 PROJECTED POPULATION	173	2,292	4,630
EST. HOUSEHOLD INCOME	\$66,456	\$64,378	\$75,473
EST. HOUSEHOLDS	77	426	1,598
DAYTIME POPULATION	4	669	1,846

### TRAFFIC COUNTS

OLD HIGHWAY 17	1,800 VPD
----------------	-----------

For more information, please contact:

#### KARL HUDSON IV, CCIM

Partner, Land Services  
(919) 987.1012  
karl.hudson@foundrycommercial.com

#### SARAH GODWIN

Senior Vice President  
(919) 309.5819  
sarah.godwin@foundrycommercial.com

#### PATRICK STEVENS

Analyst  
(919) 802.2784  
patrick.stevens@foundrycommercial.com

**FOUNDry**  
COMMERCIAL

2301 Sugar Bush Road, Suite 220  
Raleigh, NC 27612

[foundrycommercial.com](#)

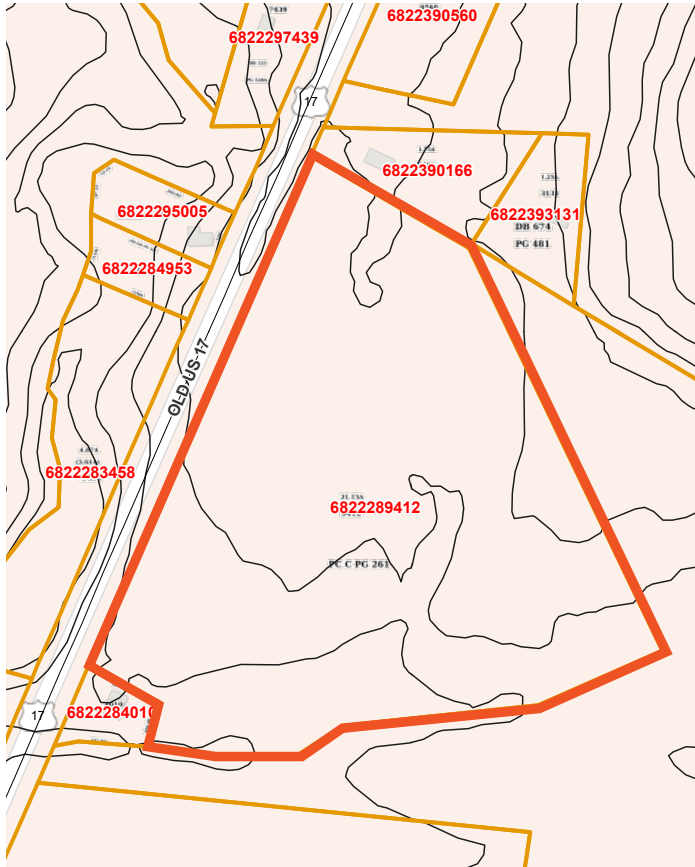
Although the information contained herein was provided by sources believed to be reliable, Foundry Commercial makes no representation, expressed or implied, as to its accuracy and said information is subject to errors, omissions or changes.



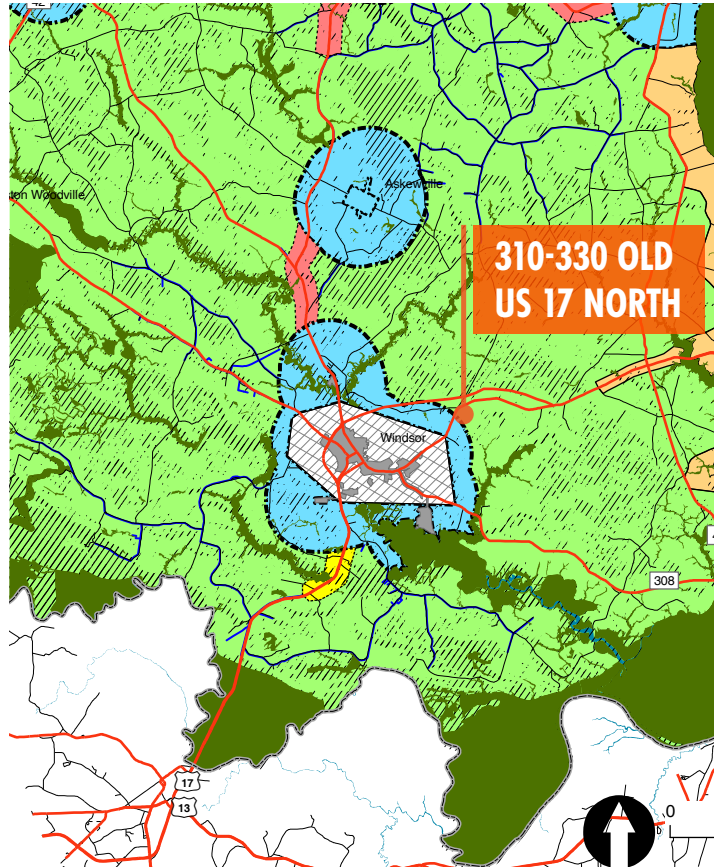
# 310-330 OLD US 17 NORTH

## AGRICULTURAL LAND FOR SALE

### TOPOGRAPHIC MAP



### FUTURE LAND USE MAP



#### LEGEND

- Agri-Forestry-Rural Housing
- AFRH Renewal Corridor
- New Growth Area\_Ret.res
- New Growth Area\_Transition
- Traditional Growth Center
- Conservation I
- Conservation II
- Estuarine and Inland Waters

For more information, please contact:

#### KARL HUDSON IV, CCIM

Partner, Land Services  
(919) 987.1012

[karl.hudson@foundrycommercial.com](mailto:karl.hudson@foundrycommercial.com)

#### SARAH GODWIN

Senior Vice President  
(919) 309.5819

[sarah.godwin@foundrycommercial.com](mailto:sarah.godwin@foundrycommercial.com)

#### PATRICK STEVENS

Analyst  
(919) 802.2784

[patrick.stevens@foundrycommercial.com](mailto:patrick.stevens@foundrycommercial.com)

**FOUNDry**  
COMMERCIAL

2301 Sugar Bush Road, Suite 220  
Raleigh, NC 27612

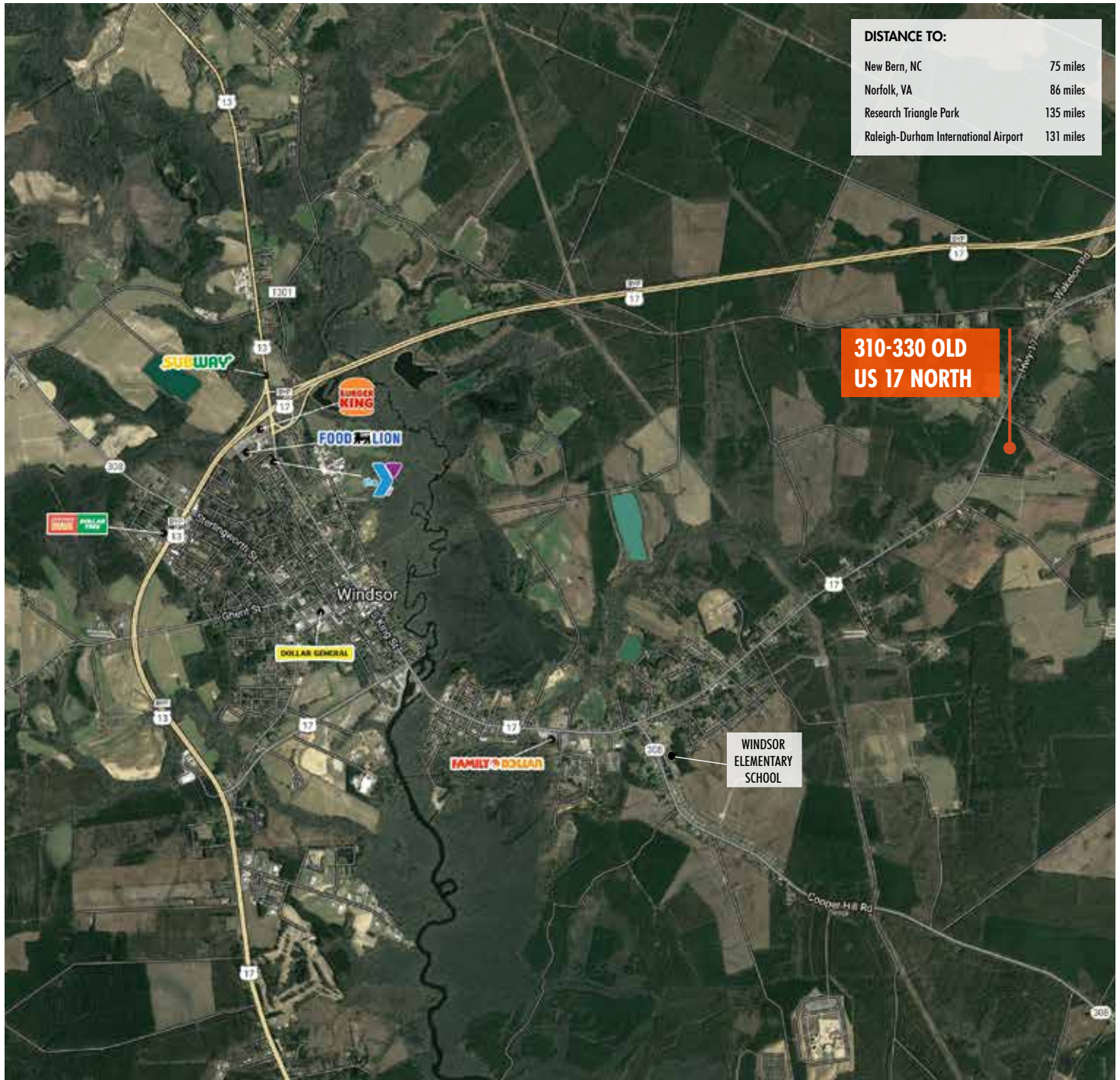
[foundrycommercial.com](http://foundrycommercial.com)

Although the information contained herein was provided by sources believed to be reliable, Foundry Commercial makes no representation, expressed or implied, as to its accuracy and said information is subject to errors, omissions or changes.

# 310-330 OLD US 17 NORTH

## AGRICULTURAL LAND FOR SALE

### AREA AMENITIES



For more information, please contact:

#### KARL HUDSON IV, CCIM

Partner, Land Services  
(919) 987.1012

[karl.hudson@foundrycommercial.com](mailto:karl.hudson@foundrycommercial.com)

#### SARAH GODWIN

Senior Vice President  
(919) 309.5819

[sarah.godwin@foundrycommercial.com](mailto:sarah.godwin@foundrycommercial.com)

#### PATRICK STEVENS

Analyst  
(919) 802.2784

[patrick.stevens@foundrycommercial.com](mailto:patrick.stevens@foundrycommercial.com)

**FOUNDRY**  
COMMERCIAL

2301 Sugar Bush Road, Suite 220  
Raleigh, NC 27612

[foundrycommercial.com](http://foundrycommercial.com)

Although the information contained herein was provided by sources believed to be reliable, Foundry Commercial makes no representation, expressed or implied, as to its accuracy and said information is subject to errors, omissions or changes.