

An aerial photograph of the Bank of America Tower in Jacksonville, Florida, taken at dusk. The tower is a tall, modern skyscraper with a glass facade that reflects the colorful sky. To the left of the tower is a shorter building with a 'BB&T' sign. The surrounding city is visible, with various other buildings and streets. The sky is filled with clouds, and the sun is setting, creating a warm, orange glow.

18,215 RSF SPACE  
FOR **SUBLEASE**

# BANK OF AMERICA TOWER

50 N LAURA STREET | JACKSONVILLE, FL 32202

FOUNDRY  
COMMERCIAL





# BUILDING FEATURES

Situated in the vibrant core of Jacksonville's Central Business district, this 42-story tower stands out as the premier Class "A" office building in the CBD. Offering stunning vistas of the St. Johns River, an award-winning design and architecture, and unmatched on-site amenities, the BofA Tower presents occupants with an exclusive chance to lease space in a genuinely iconic structure. Furthermore, upcoming amenities in the surrounding area enhance the appeal of the BofA Tower by combining on-site conveniences with easily accessible attractions, providing occupants with the best of both worlds—a plethora of on-site options along with the ability to enjoy a truly urban environment.



On-site Parking



24-7 Security



On-site Coffee bar and deli



Efficient Floor plates

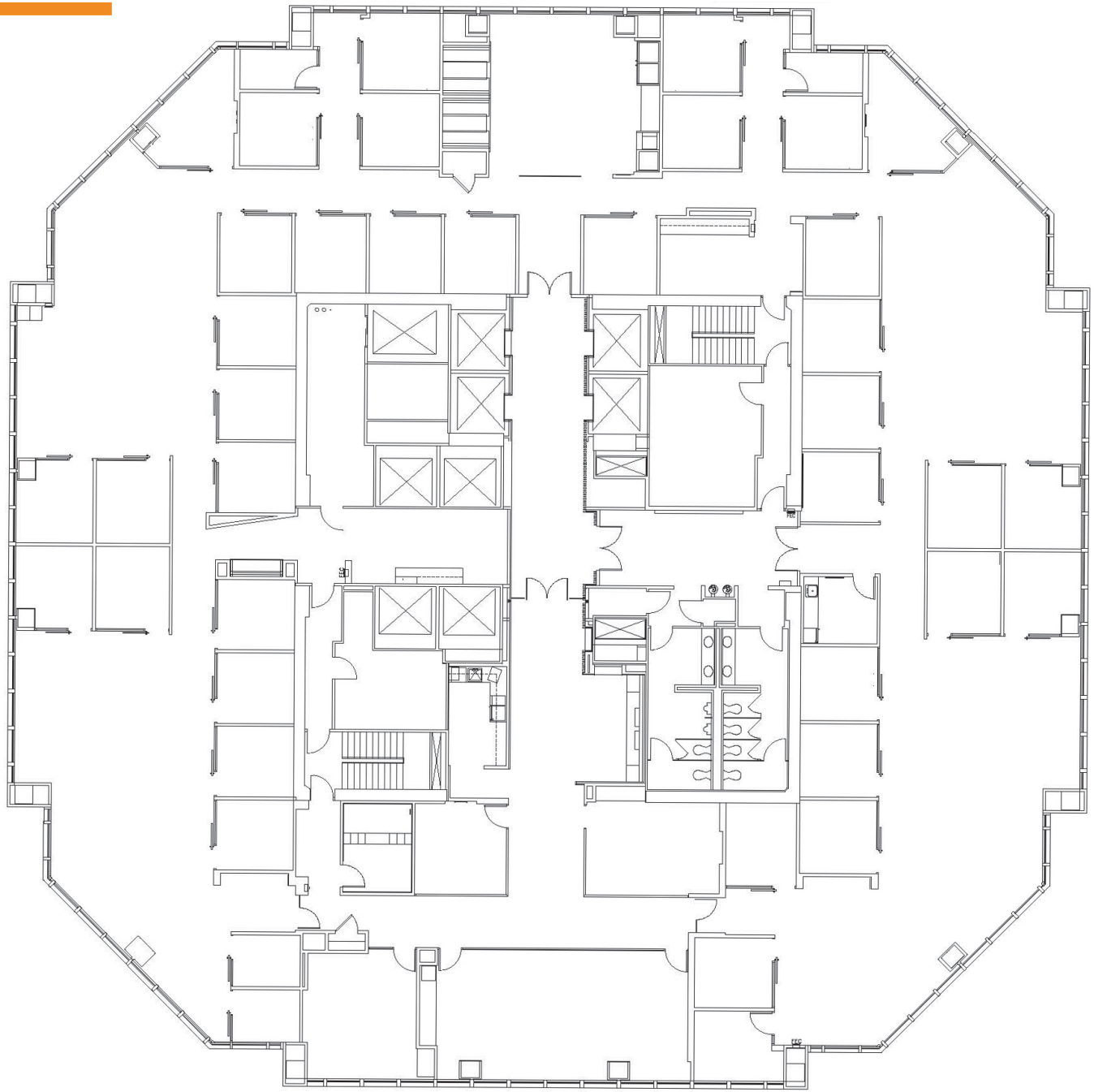


On-site Property Management



Spacious lobby with 3 entrances

## 32<sup>ND</sup> FLOOR - 18,215 RSF



## SUITE FEATURES

- Configured as a full-floor to maximize space efficiency
- High-end contemporary finishes throughout
- 41 Private offices with glass slider doors
- 6 conference rooms with glass slider doors
- Large breakroom
- Fully wired with CAT 6 IT cabling
- Multiple open areas to support 30-40 modular systems
- Available immediately

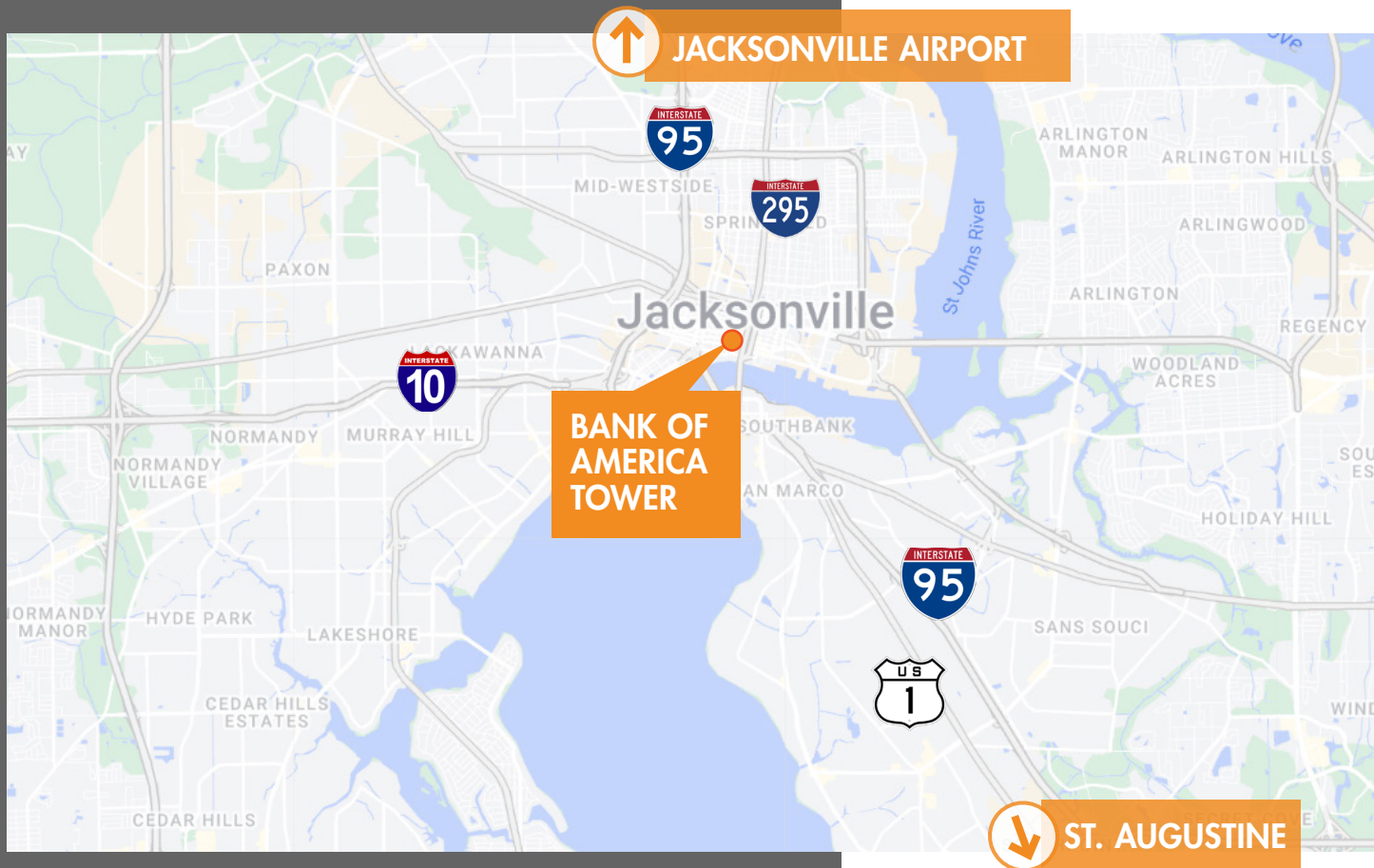






## LOCATION

- Outstanding location in downtown Jacksonville
- Easy access to I-10; I-95 & I-295
- 15 miles to Jacksonville International Airport
- Hotels, restaurants and cafe's within walking distance





# CONTACT

---

FOR MORE INFORMATION:

**BRAD R. CHRISCHILLES**

904.910.0504

[Brad.Chrischilles@foundrycommercial.com](mailto:Brad.Chrischilles@foundrycommercial.com)

**FOUND**RY  
COMMERCIAL

