

FOR SUBLEASE



JACKSONVILLE, FLORIDA

1300 RIVERPLACE BLVD



SPACE SPECIFICATIONS

AVAILABLE	PARTIAL 2ND FLOOR 2,693 RSF
TIMING	IMMEDIATELY
LEASE RATE	\$22.00 PSF (FULL SERVICE)
SUBLEASE TERM	4/15/27

COMMENTS

- Space built in 2023
- Fully furnished plug-n-play space
- Parking 3.5/1000 SF
- Renovated building lobby, common corridors, and elevators
- On-site property management
- Building lounge with vending machines
- Secure on-site parking
- Riverplace Skyway directly behind building

FOR MORE INFORMATION, PLEASE CONTACT:

ANDREW HAWKINS | 904.345.2022

Senior Vice President

Andrew.Hawkins@foundrycommercial.com

Licensed Real Estate Broker

Although the information contained herein was provided by sources believed to be reliable, Foundry Commercial makes no representation, expressed or implied, as to its accuracy and said information is subject to errors, omissions or changes.

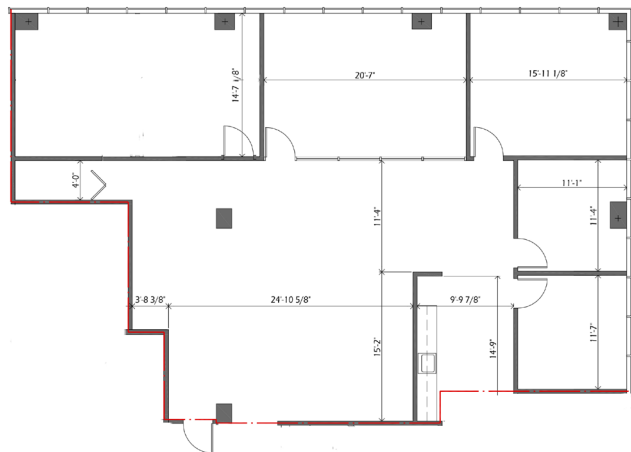
FOUNDRY
COMMERCIAL

foundrycommercial.com

RIVERPLACE SOUTH

1300 RIVERPLACE BLVD

FLOOR PLAN



FOR MORE INFORMATION, PLEASE CONTACT:

ANDREW HAWKINS | 904.345.2022

Senior Vice President

Andrew.Hawkins@foundrycommercial.com

Licensed Real Estate Broker

Although the information contained herein was provided by sources believed to be reliable, Foundry Commercial makes no representation, expressed or implied, as to its accuracy and said information is subject to errors, omissions or changes.

FOUNDry
COMMERCIAL

foundrycommercial.com