

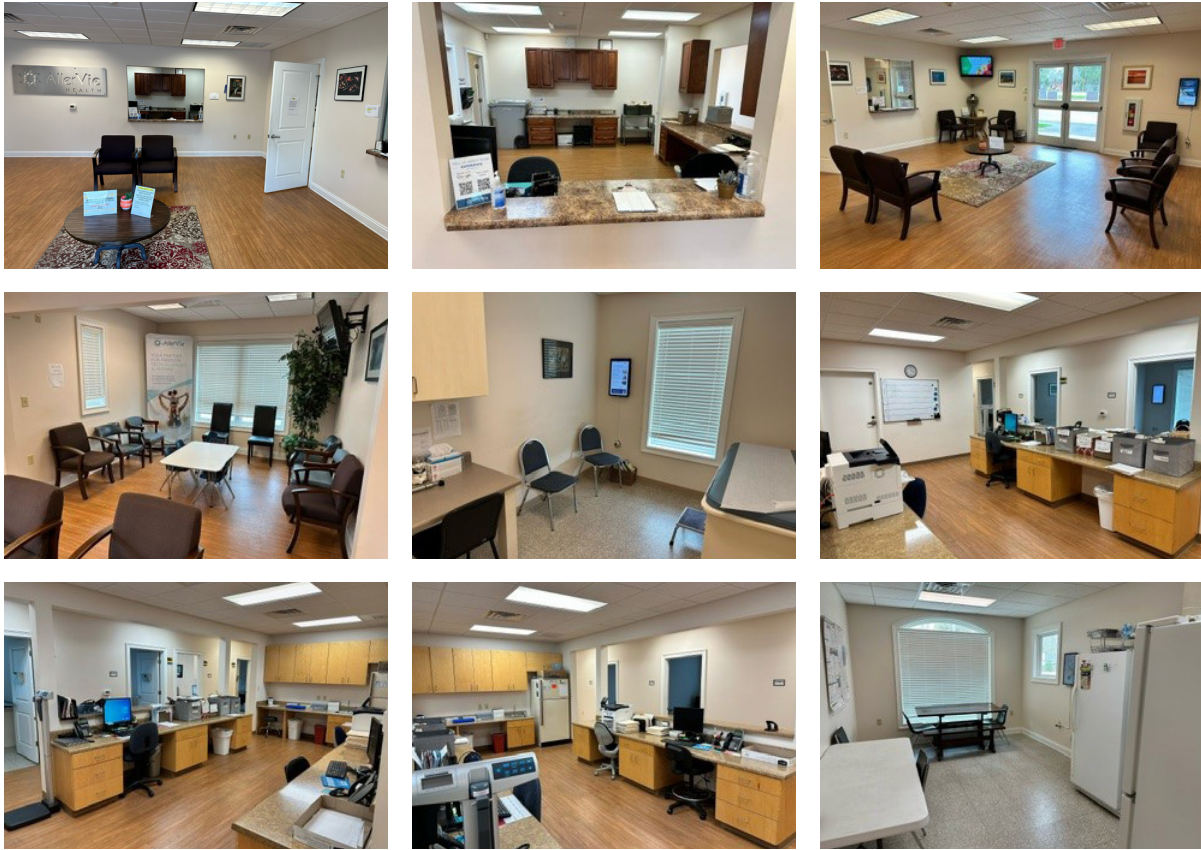
520 JOHN D ODOM RD

100 - 6,274 SF SUBLEASE AVAILABLE

**MEDICAL OFFICE SUBLEASE LOCATED
MINUTES FROM FLOWERS HOSPITAL**



SUITE PHOTOS



PROPERTY FEATURES

- 6,274 SF sublease divisible down to 100 SF
- Fully built out medical office space
- Located within minutes of Flowers Hospital and nearby to many medical practices
- Surround by several restaurants and retailers
- 14 minute drive to Dothan Regional Airport

SUITE DETAILS

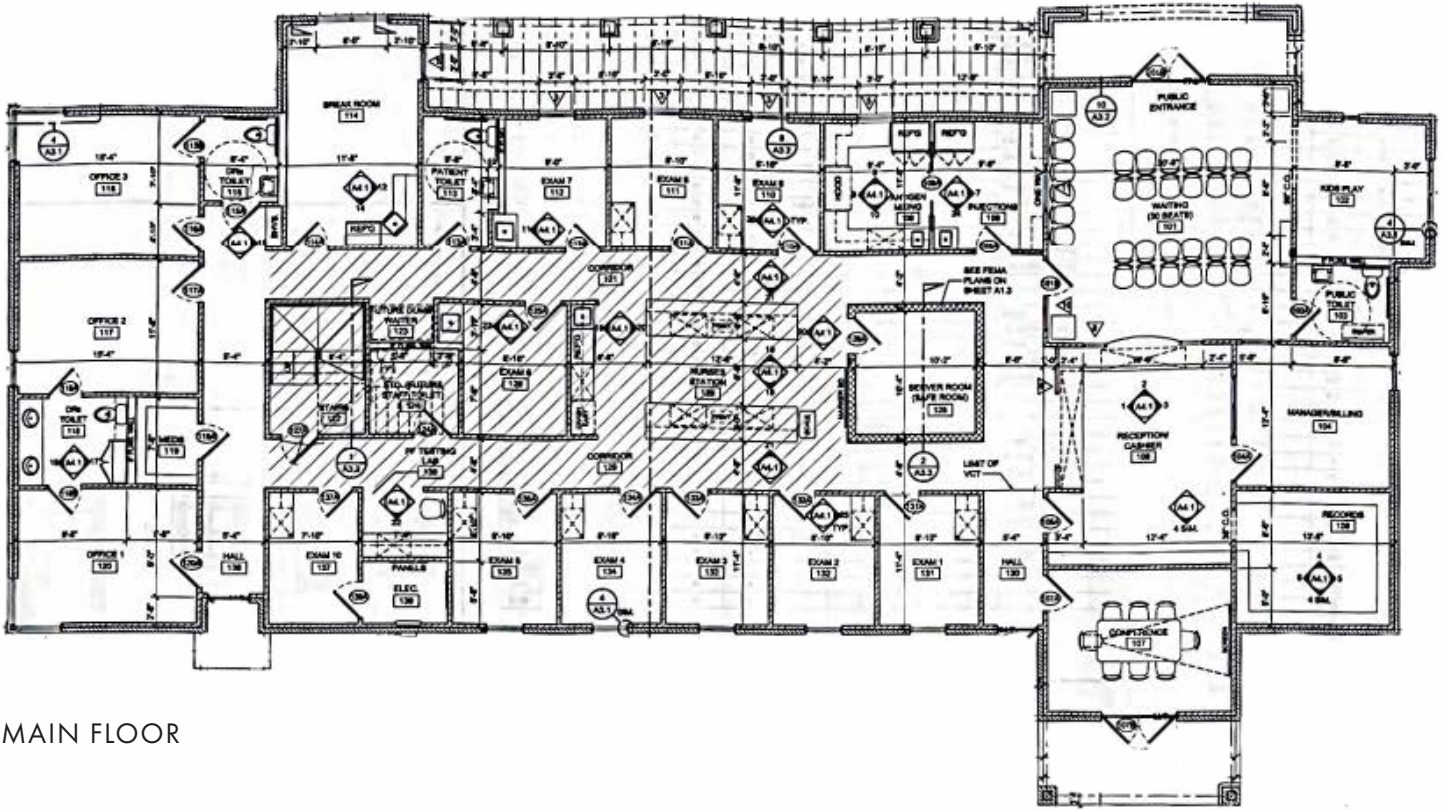
Size:	100 - 6,274 SF
Layout:	Fully built out medical facility with multiple exam rooms, large open reception space, and all associated support space
Parking:	Surface Parking (28)
Timing:	30 Days
Rate:	Negotiable
Lease Expiration:	7/14/2026

FOR MORE INFORMATION

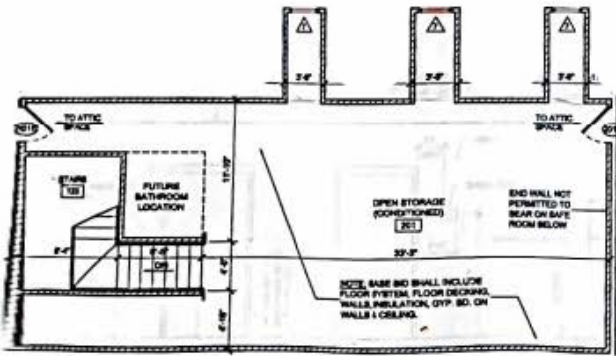
SHANNON AUTY **334.406.1161** | sauty@talcor.com

SARAH MAFFEI **904.910.4408** | sarah.maffei@foundrycommercial.com

FLOOR PLAN



MAIN FLOOR



MEZZANINE

FOR MORE INFORMATION

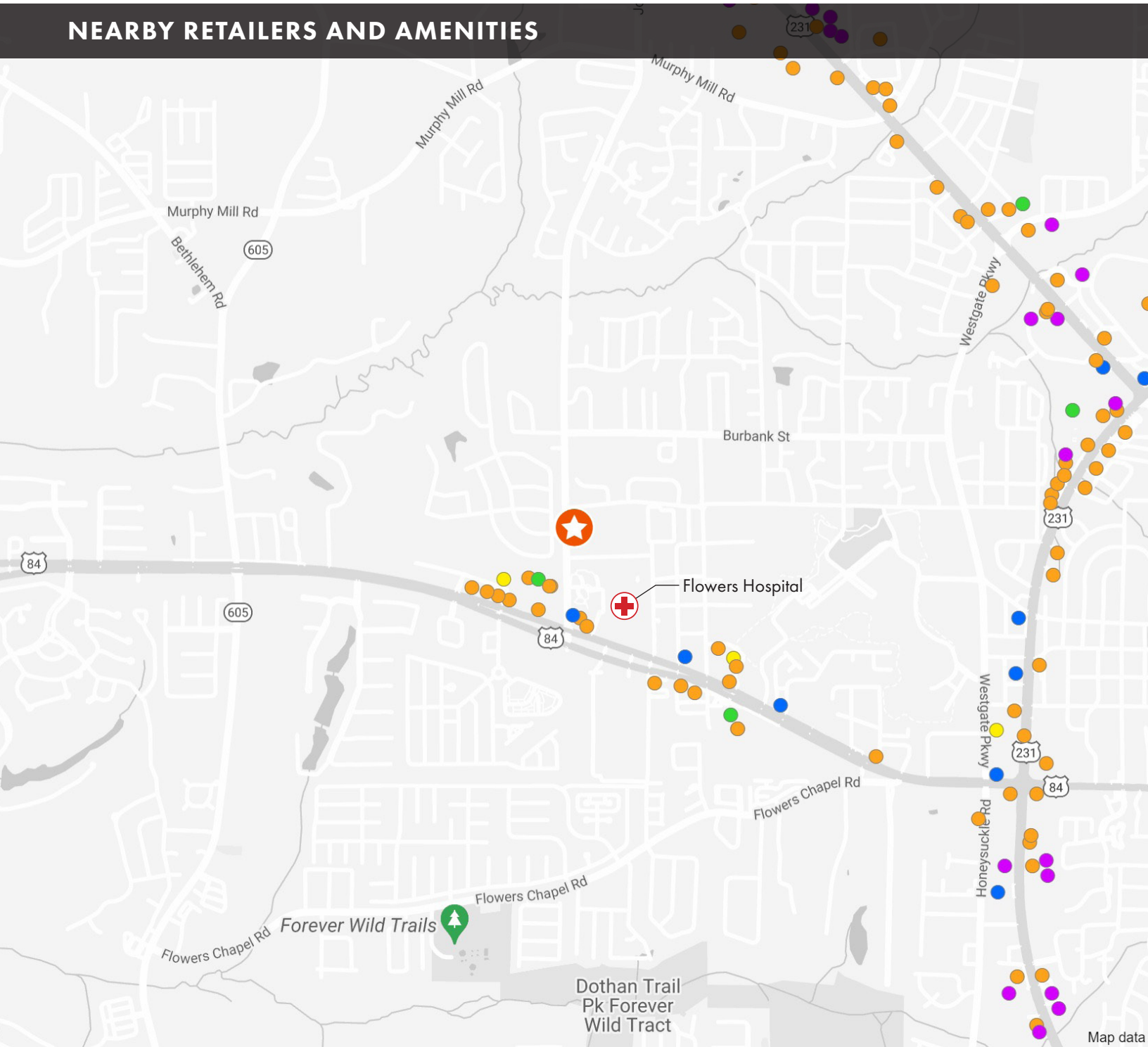
SHANNON AUTY **334.406.1161** | sauty@falcor.com

SARAH MAFFEI **904.910.4408** | sarah.maffei@foundrycommercial.com



www.foundrycommercial.com

NEARBY RETAILERS AND AMENITIES



- GROCERY
- HOTELS
- DINING
- FITNESS
- BANKS

FOR MORE INFORMATION

SHANNON AUTY **334.406.1161** | sauty@talcor.com

SARAH MAFFEI **904.910.4408** | sarah.maffei@foundrycommercial.com