



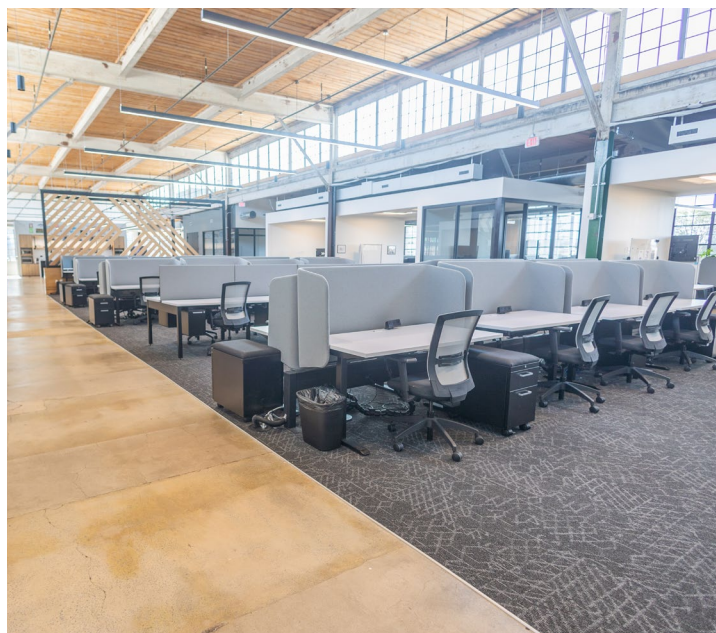
CHADBOURN

2500 N BREVARD ST, CHARLOTTE, NC 28205

OFFICE SPACE FOR SUBLEASE

SUBLEASE FEATURES

- 18,331 SF Plug & Play sublease available in NoDa.
- Master Lease Expires 6/30/31
- Existing FF&E Negotiable
- Rate Negotiable
- Expansive windows & natural light
- Exposed original brickwork
- 0.2 mile walk to 25th Street lightrail station
- Parking Ratio of 3.0/1,000 RSF



FOR MORE INFORMATION, PLEASE CONTACT:

MIKE DEMPSEY | 813.245.0885
Associate
mike.dempsey@foundrycommercial.com

BRIAN BRTALIK | 704.705.3866
Managing Director / Principal
brian.brtalik@foundrycommercial.com

FOUNDRY
COMMERCIAL

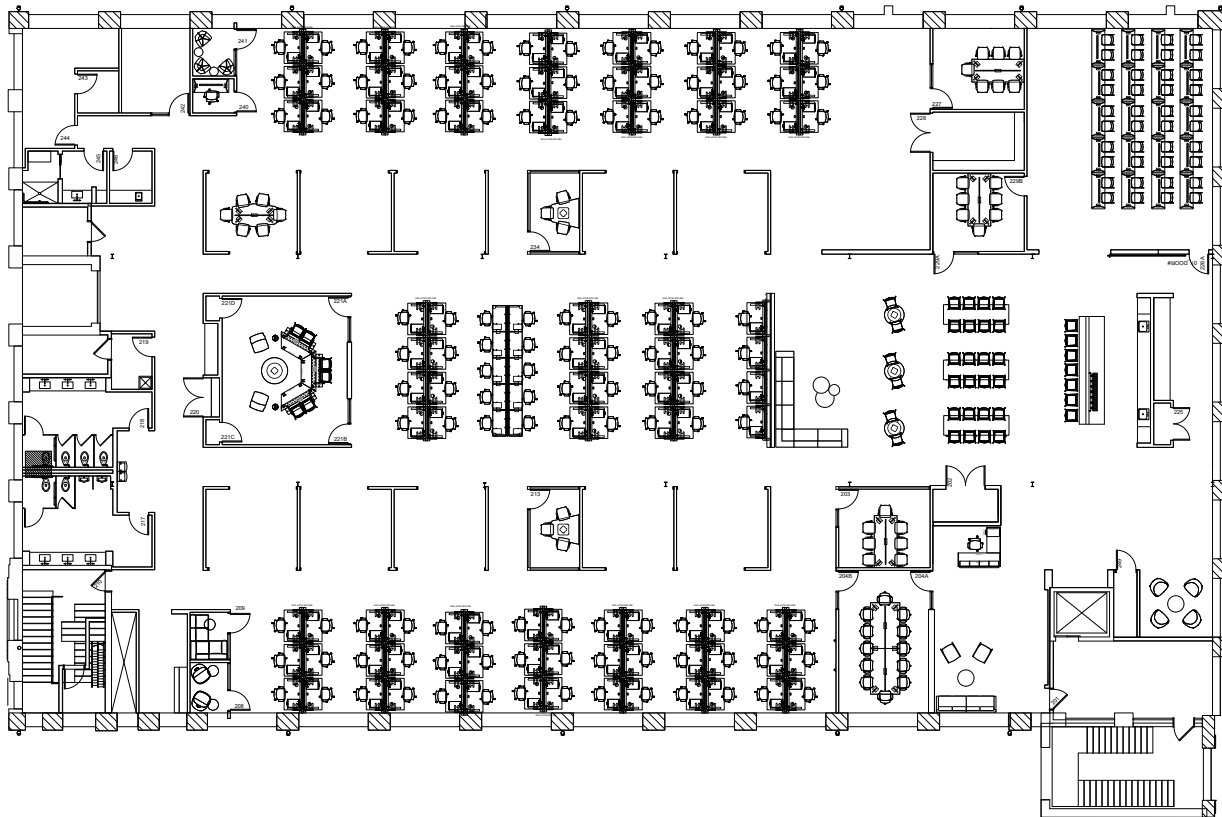
Although the information contained herein was provided by sources believed to be reliable, Foundry Commercial makes no representation, expressed or implied, as to its accuracy and said information is subject to errors, omissions or changes.

foundrycommercial.com

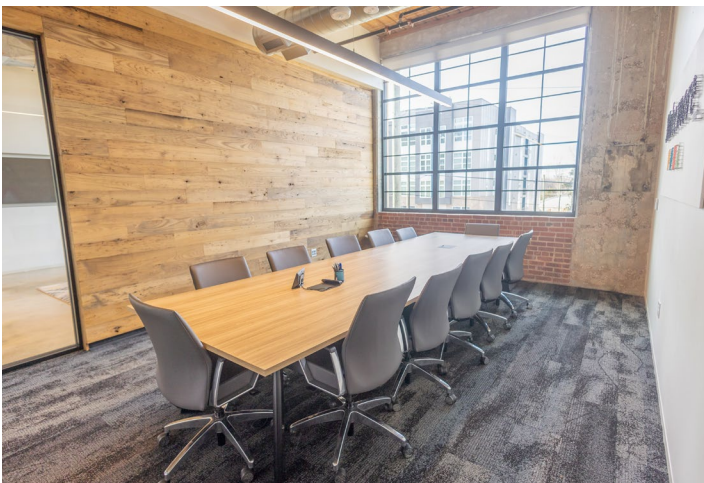
FLOOR PLAN

2ND FLOOR (REPRESENTATIVE FURNITURE PLAN)

±18,331 SF AVAILABLE



PHOTOS



FOR MORE INFORMATION, PLEASE CONTACT:

MIKE DEMPSEY | 813.245.0885

Associate

mike.dempsey@foundrycommercial.com

BRIAN BRTALIK | 704.705.3866

Managing Director / Principal

brian.brtalik@foundrycommercial.com

FOUNDRY
COMMERCIAL

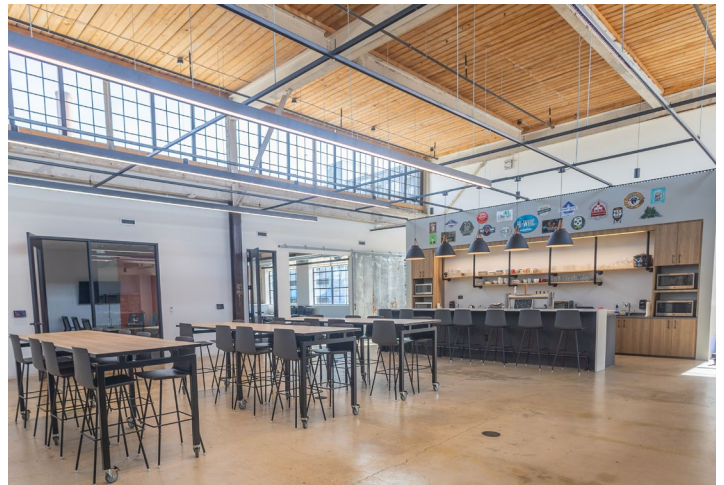
Although the information contained herein was provided by sources believed to be reliable, Foundry Commercial makes no representation, expressed or implied, as to its accuracy and said information is subject to errors, omissions or changes.

foundrycommercial.com

±18,331 RSF AVAILABLE FOR SUBLEASE

CHADBOURN | 2500 N BREVARD ST, CHARLOTTE, NC 28205

PHOTOS



FOR MORE INFORMATION, PLEASE CONTACT:

MIKE DEMPSEY | 813.245.0885
Associate
mike.dempsey@foundrycommercial.com

BRIAN BRTALIK | 704.705.3866
Managing Director / Principal
brian.brtalik@foundrycommercial.com

FOUNDRY
COMMERCIAL

Although the information contained herein was provided by sources believed to be reliable, Foundry Commercial makes no representation, expressed or implied, as to its accuracy and said information is subject to errors, omissions or changes.

foundrycommercial.com