



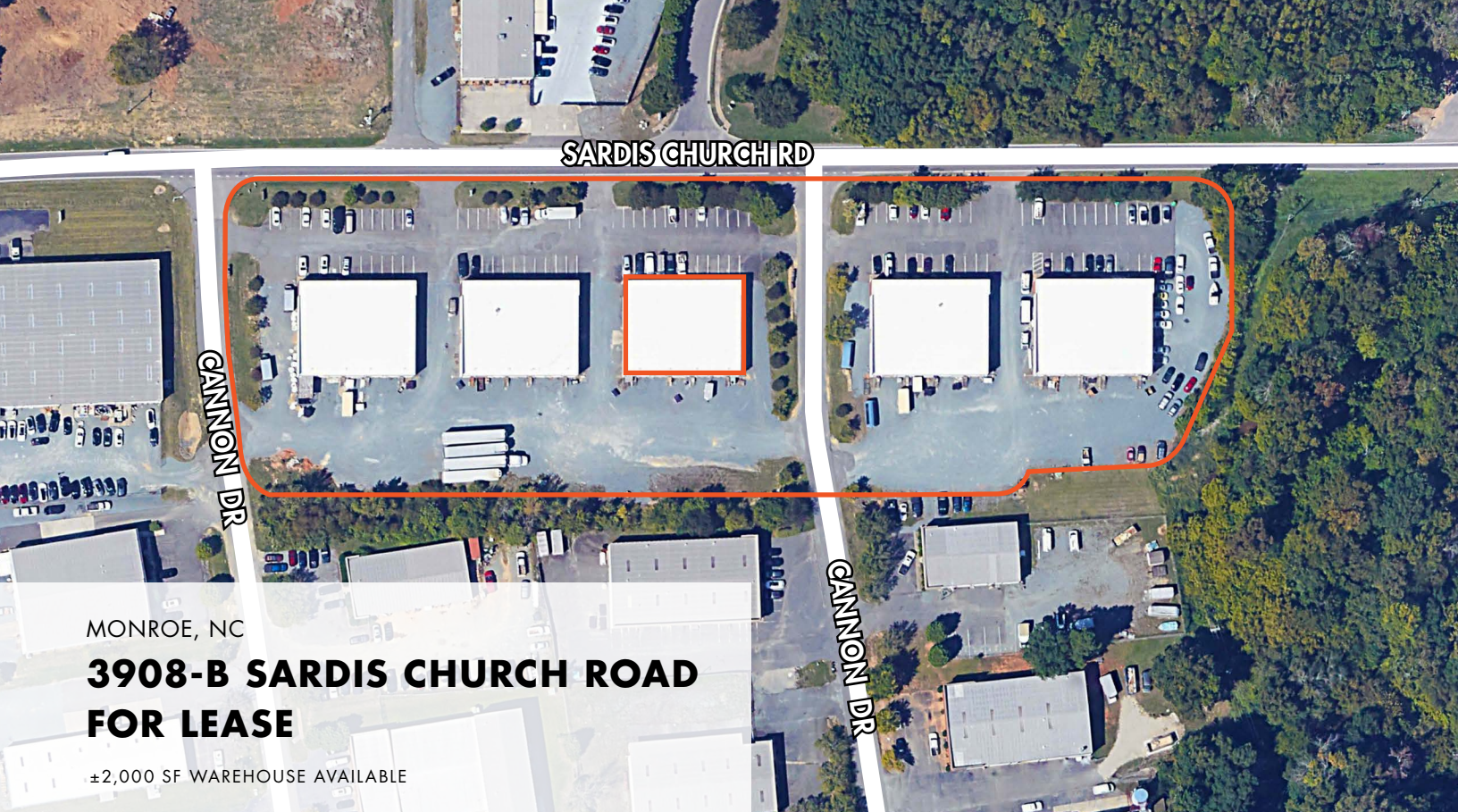
FOUNDRY
COMMERCIAL

MONROE, NC

SARDIS CHURCH BUSINESS PARK

FOR LEASE

± 2,000 SF WAREHOUSE



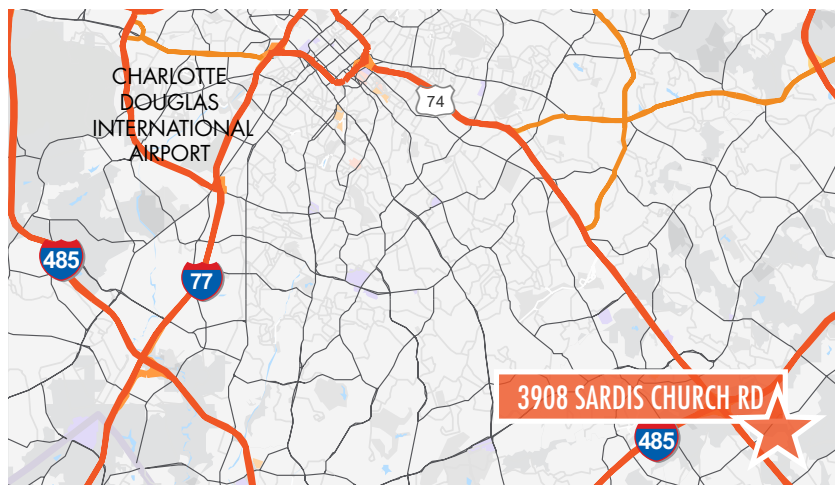
MONROE, NC

3908-B SARDIS CHURCH ROAD FOR LEASE

±2,000 SF WAREHOUSE AVAILABLE

PROPERTY FEATURES

- ±2,000 SF Available
- One (1) Dock High Door
- 14' Clear Height



BLDG 3908

FOR MORE INFORMATION, PLEASE CONTACT:

BEN ROWELL | 704.319.5080
ben.rowell@foundrycommercial.com
Licensed Real Estate Broker

CASEY MULHERN | 704.705.1182
casey.mulhern@foundrycommercial.com
Licensed Real Estate Broker

FOUNDRY
COMMERCIAL

foundrycommercial.com

Although the information contained herein was provided by sources believed to be reliable, Foundry Commercial makes no representation, expressed or implied, as to its accuracy and said information is subject to errors, omissions or changes.